



Shop To Let

318 Lewisham High Street
London
SE13 6JZ

Size
Approx 776 sq ft

Rent
£25,000 pa

Rateable Value
£10,000

- * Great visibility on Lewisham High St
- * Close proximity to Ladywell Station
- * Major Road Access (A205)
- * Extraction
- * Use class E with A5 (Hot Food Takeaway)

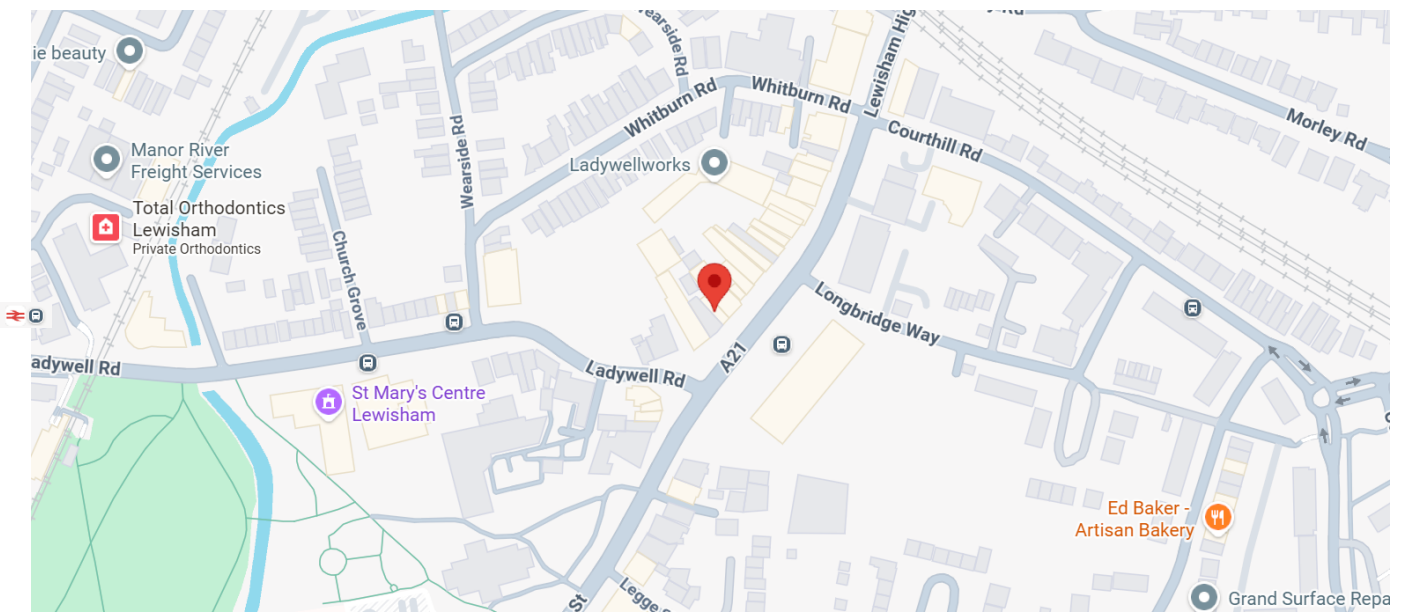
SHOP TO LET

Location

The property occupies a prominent position on Lewisham High Street which sits centre in densely populated residential area.

Lewisham Station is a short 6-minute walk away, providing access to the DLR, Southeastern, and National Rail networks. Numerous bus routes serve the High Street directly, offering frequent connections to Seven Sisters, Catford, and Central London. The property is positioned just off the South Circular (A205), reached within a 5-minute drive.

Notable nearby retailers include Marks & Spencer, Lidl, and Starbucks.



Description

Formerly operating as a Chinese takeaway, this ground-floor unit comprises of a front-of-house serving area with dedicated preparation and storage space to the rear. The premises is equipped with an integrated extraction system vented to the exterior and benefits from a sought-after Class A5 (Hot Food Takeaway) license.



Lease Terms

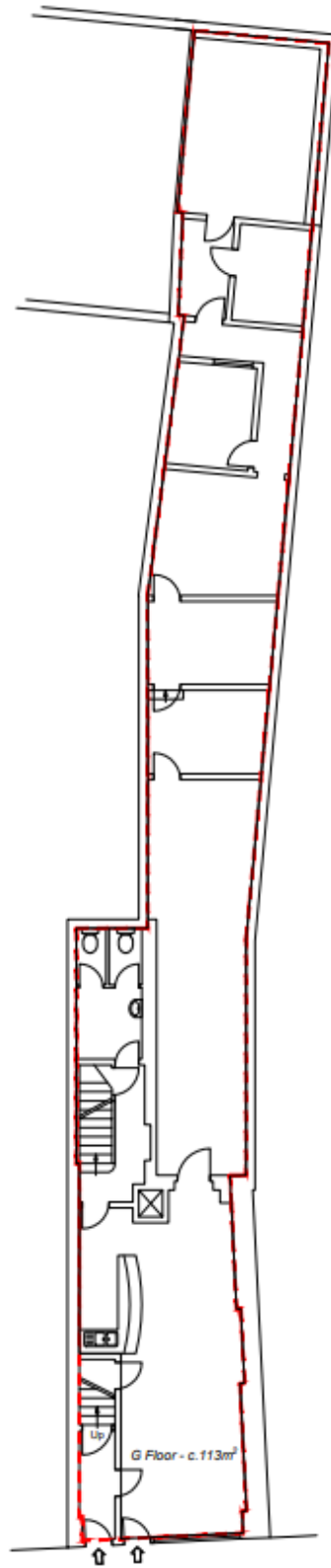
Available by way of a new lease direct from the landlord.

Floor Area

Ground

776 sq ft

Floor Plans



Ground Floor

