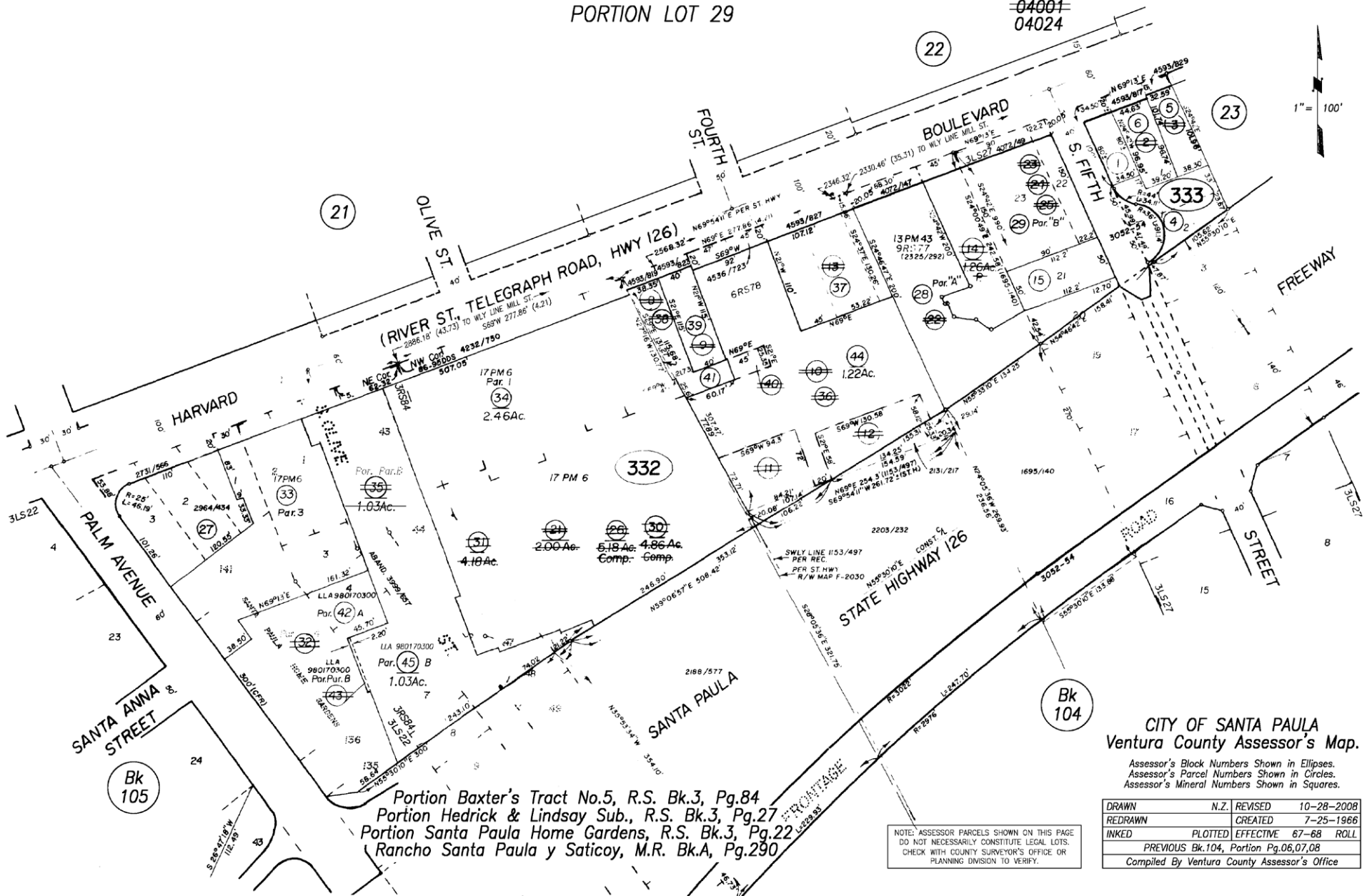


# 327 S PALM AVENUE, SANTA PAULA - PARCEL MAP

RANCHO SANTA PAULA Y SATICOY  
PORTION LOT 29

Tax Rate Area  
~~04001~~  
04024

103-33



Portion Baxter's Tract No.5, R.S. Bk.3, Pg.84  
 Portion Hedrick & Lindsay Sub., R.S. Bk.3, Pg.27  
 Portion Santa Paula Home Gardens, R.S. Bk.3, Pg.22  
 Rancho Santa Paula y Saticoy, M.R. Bk.A, Pg.290

CITY OF SANTA PAULA  
Ventura County Assessor's Map.

Assessor's Block Numbers Shown in Ellipses.  
 Assessor's Parcel Numbers Shown in Circles.  
 Assessor's Mineral Numbers Shown in Squares.

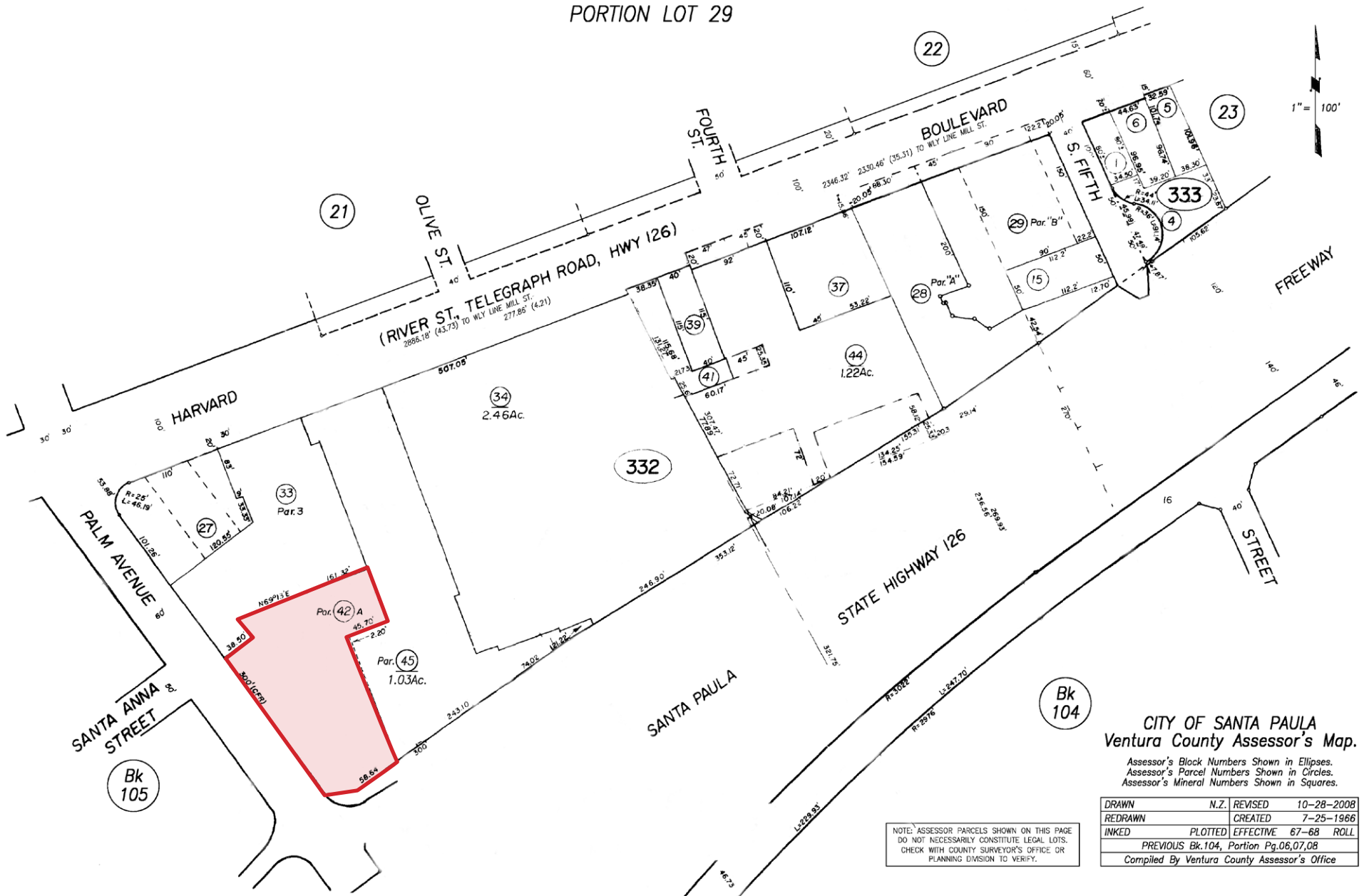
|  |      |                                      |                      |
|--|------|--------------------------------------|----------------------|
| DRAWN  | N.Z. | REVISED                              | 10-28-2008           |
| REDRAWN                                      |      | CREATED                              | 7-25-1966            |
| INKED  |      | PLOTTED                              | EFFECTIVE 67-68 ROLL |
|  |      | PREVIOUS Bk.104, Portion Pg.06,07,08 |                      |
| Compiled By Ventura County Assessor's Office |      |                                      |                      |

NOTE: ASSESSOR PARCELS SHOWN ON THIS PAGE DO NOT NECESSARILY CONSTITUTE LEGAL LOTS. CHECK WITH COUNTY SURVEYOR'S OFFICE OR PLANNING DIVISION TO VERIFY.

# 327 S PALM AVENUE, SANTA PAULA - PARCEL MAP

RANCHO SANTA PAULA Y SATICOY  
PORTION LOT 29

103-33



CITY OF SANTA PAULA  
Ventura County Assessor's Map.

Assessor's Block Numbers Shown in Ellipses.  
Assessor's Parcel Numbers Shown in Circles.  
Assessor's Mineral Numbers Shown in Squares.

|  |         |           |            |
|--|---------|-----------|------------|
| DRAWN  | N.Z.    | REVISED   | 10-28-2008 |
| REDRAWN                                      |         | CREATED   | 7-25-1966  |
| INKED  | PLOTTED | EFFECTIVE | 67-68 ROLL |
| PREVIOUS Bk.104, Portion Pg.06,07,08         |         |           |            |
| Compiled By Ventura County Assessor's Office |         |           |            |

NOTE: ASSESSOR PARCELS SHOWN ON THIS PAGE  
DO NOT NECESSARILY CONSTITUTE LEGAL LOTS.  
CHECK WITH COUNTY SURVEYOR'S OFFICE OR  
PLANNING DIVISION TO VERIFY.