



316 Keira Street, Wollongong

Busy Location

- . Office/showroom/warehouse
- . Approx 188sqm retail space/showroom
- . Approx 125sqm warehouse
- . Undercover loading bay
- . Business enterprise zone
- . Fronting busy Keira Street
- . Approx total undercover area of 417m²

FOR LEASE
\$93,420pa + GST

BUILDING AREA
417sqm

AGENTS

Chris Tudzarov
0451 714 441
chris.tudzarov@ljhwollongong.com.au

Con Papadopoulos
0408 604 040
con.papadopoulos@ljhwollongong.com.au

AGENCY

LJ Hooker Wollongong | Corrimal |
Shellharbour
(02) 4229 8600

All information contained therein is gathered from relevant third parties sources.
We cannot guarantee or give any warranty about the information provided.
Interested parties must rely solely on their own enquiries.



MORE DETAILS

Property ID VX2HQZ
Property Type Retail
 Showrooms/Bulky Goods
Building Area 417 m2
Parking 4

Chris Tudzarov 0451 714 441

Commercial Sales & Leasing | chris.tudzarov@ljhwollongong.com.au

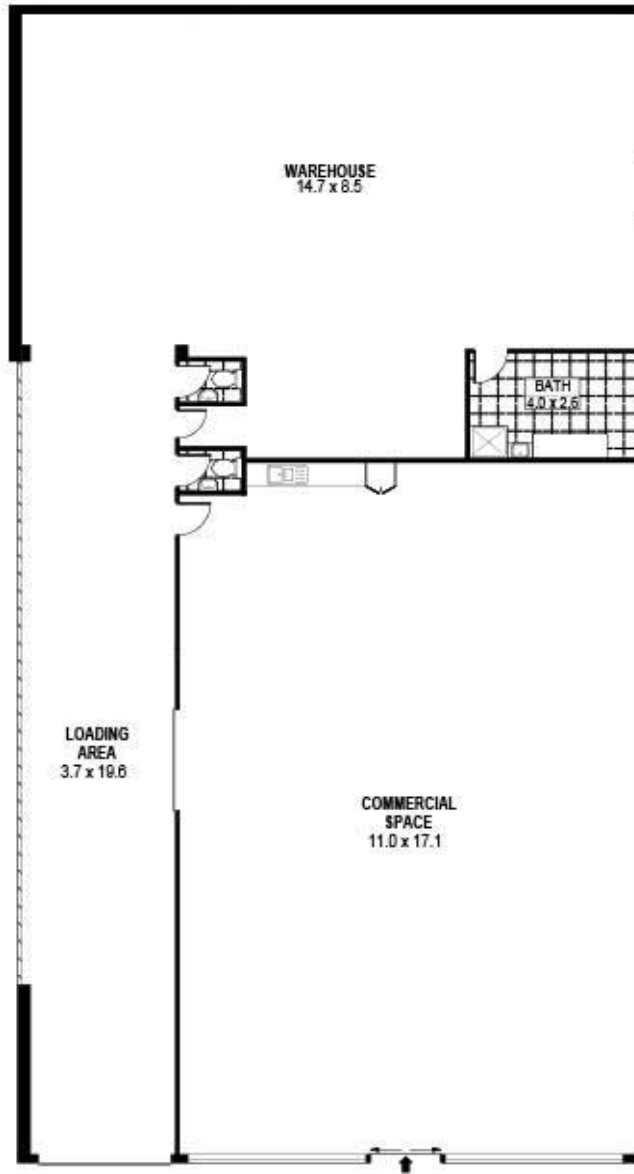
Con Papadopoulos 0408 604 040

Commercial Property Manager |
con.papadopoulos@ljhwollongong.com.au

LJ Hooker Wollongong | Corrimal | Shellharbour (02) 4229 8600

69 Kembla Street, WOLLONGONG NSW 2500
wollongong.ljhooker.com.au | wollongong@ljhooker.com.au





SCALE (METRES)

PLANS SHOWN ONLY INDICATIVE OF LAYOUT. DIMENSIONS ARE APPROXIMATE.
Ref. No: 51484

Int: 417sqm

316 KEIRA STREET

WOLLONGONG

All information contained therein is gathered from relevant third parties sources.
We cannot guarantee or give any warranty about the information provided.
Interested parties must rely solely on their own enquiries.

