



Terriers House, Amersham Road, High Wycombe, HP13 5AJ

To Let | 275 to 1,717 sq ft

SELF-CONTAINED OFFICES ALL INCLUSIVE RENTS

**Terriers House, Amersham Road,
High Wycombe, HP13 5AJ**

TO LET

Summary

- Size: 275 to 1,717 sq ft
- Rent: £950 - £1,200 per month Includes rates, utilities, service and estate charge and buildings insurance.
- EPC: C (63)

Further information

- [View details on our website](#)
- [Microsite](#)

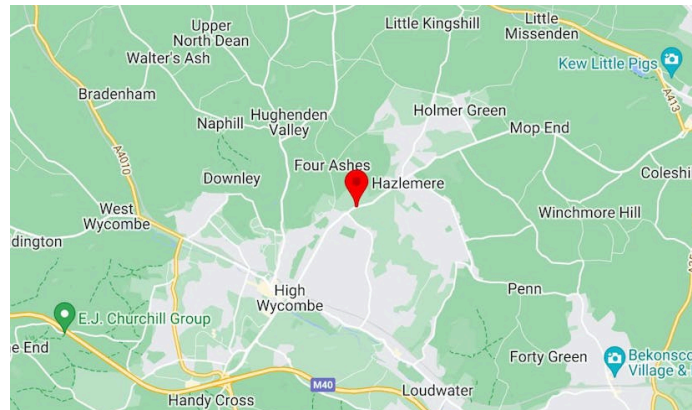
Viewings and Further Information



Neave DaSilva
07827 908926
nds@chandlergarvey.com



James Garvey
01494 460258 | 07471996320
jg@chandlergarvey.com



Description

A fully refurbished Grade II office building offering self contained accommodation on the ground and 1st floor with exclusive entrance.

Suites G15 and G16 can be available together or separately.

Flexible lease terms available. Rent includes rates, utilities, service and estate charge and buildings insurance.

Location

High Wycombe is strategically located on the M40 motorway 30 miles west of Central London and excellent road communications are available to other principal towns in the Greater Thames Valley region. There are very good train services to London Marylebone with a fastest journey time of approximately 25 minutes.

Terriers House is situated only 1.4 miles from High Wycombe train stations and 1.6 miles from the Eden Shopping Centre.



Terms

Flexible licences available on all inclusive rents

Money Laundering / Identity Checks

Money Laundering and Identity checks will be carried out on all Tenants and proof of identity documents will be required.

VAT

Applicable

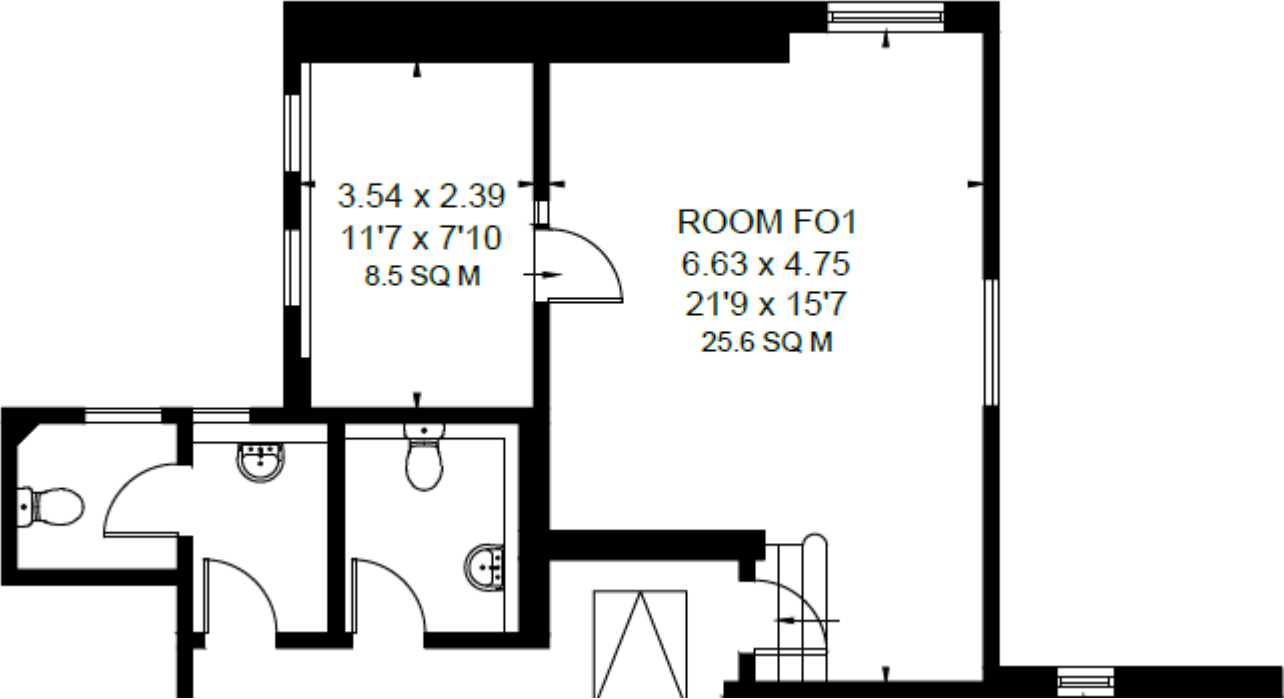
Legal fees

Each party to bear their own costs

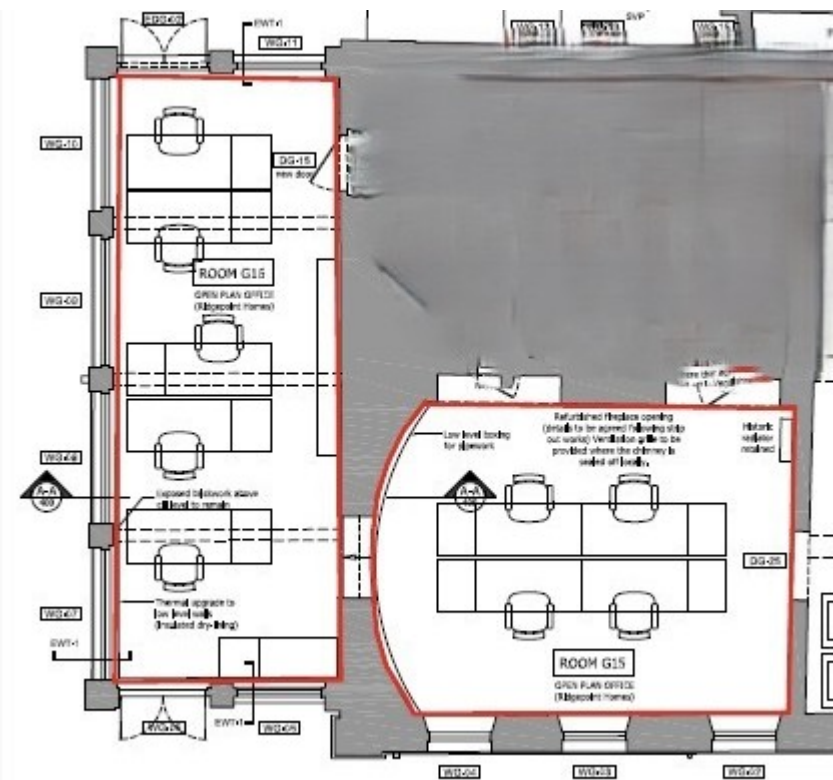
Accommodation

Name	sq ft	sq m	Rent	Availability
Ground - Room G15	329	30.57	£960 /month Includes rates, utilities, service and estate charge and buildings insurance	Available
Ground - Room G16	329	30.57	£960 /month Includes rates, utilities, service and estate charge and buildings insurance	Available
Ground - Room G22	315	29.26	£920 /month Includes rates, utilities, service and estate charge and buildings insurance	Available
Ground - Room G19	469	43.57	£1,200 /month Includes rates, utilities, service and estate charge and buildings insurance	Available
1st - Room F01	275	25.55	£950 /month Includes rates, utilities, service and estate charge and buildings insurance.	Available
Total	1,717	159.52		

Floor plan



Floor plan



Floor plan

