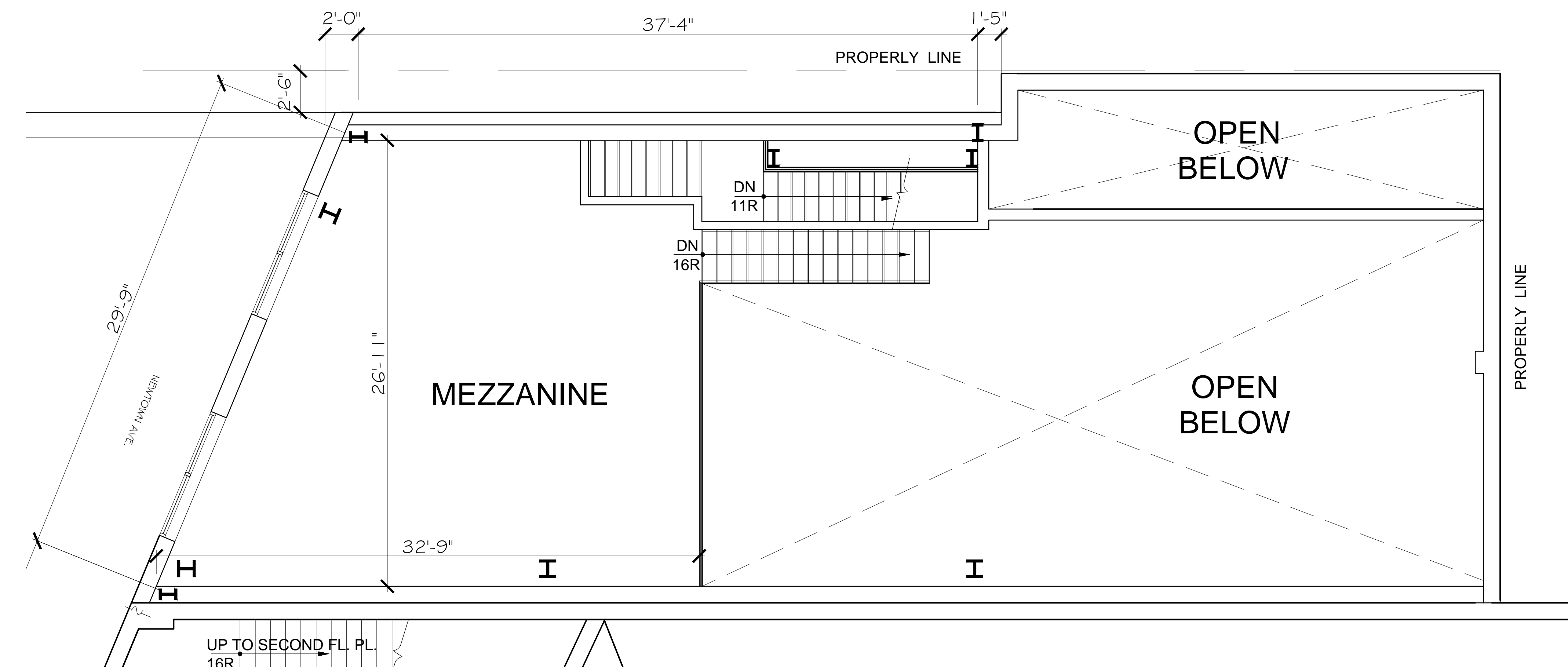


GROUND FLOOR PLAN



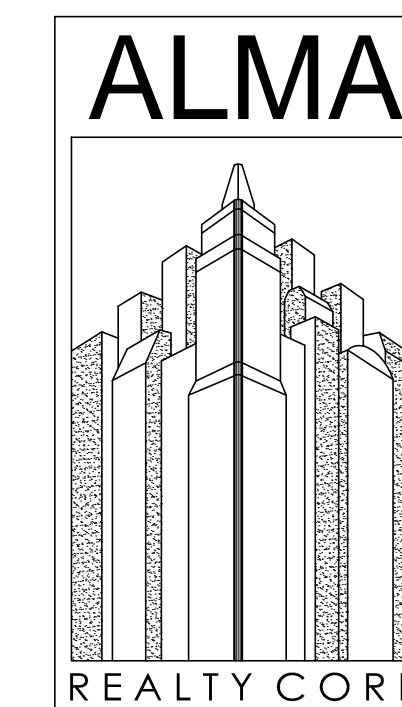
MEZZANINE FLOOR PLAN

NOTES:

ARCHITECT:

ENGINEER:

CONSULTANT:



31-10 37TH AVE, SUITE 500
LONG ISLAND CITY, NY 11101
718.267.0300 / 718.267.0329
WWW.ALMAREALTY.COM

NOTE:
ALL IDEAS, DESIGNS, ARRANGEMENTS AND PLANS INDICATED OR REPRESENTED BY THIS DRAWING ARE OWNED BY AND ARE THE PROPERTY OF ALMA REALTY, AND WERE CREATED, EVOLVED AND DEVELOPED FOR USE ON AND IN CONNECTION WITH THE SPECIFIED PROJECT. NONE OF SUCH IDEAS, DESIGNS, ARRANGEMENTS OR PLANS SHALL BE USED BY OR DISCLOSED TO ANY PURSUE WHATSOEVER WITHOUT THE WRITTEN PERMISSION OF ALMA REALTY.

WRITTEN DIMENSIONS ON THIS DRAWING SHALL HAVE PRECEDENCE OVER SCALED DIMENSIONS. CONTRACTOR SHALL VERIFY AND BE RESPONSIBLE FOR ALL DIMENSIONS AND CONDITIONS ON THE JOB AND THIS OFFICE MUST BE NOTIFIED OF ANY VARIATIONS FROM DIMENSIONS AND CONDITIONS SHOWN BY THESE DRAWINGS. SHOP DETAILS MUST BE SUBMITTED TO THIS OFFICE FOR APPROVAL BEFORE PROCEEDING WITH FABRICATION.

LEGAL NOTICE:
ALTERATIONS BY ANY PERSON, IN ANY WAY, OF ANY ITEM CONTAINED ON THIS DOCUMENT UNLESS ACTING UNDER THE DIRECTION OF THE LICENSED ARCHITECT WHOSE PROFESSIONAL SEAL IS AFFIXED HERETO IS A VIOLATION OF TITLE V.B. SECT 6810 OF NEW YORK STATE LAW.
© COPYRIGHT 2010 ALMA REALTY, ALL RIGHTS RESERVED

NO.	DATE	ISSUES

PROJECT:
AVAILABLE SPACE
30-15 NEWTOWN AVE.
ASTORIA, NY 11102

SHEET TITLE:
GROUND & MEZZANINE FLOOR PLAN

JOB No. NY-2010	DWG No. A-001.00
DATE:	Sheet 1 of
SCALE: 1/4" = 1'-0"	
DRAWING BY: BS, RF / PS	