



Dover Industrial Open Storage Leasing Opportunity

Great Farthingloe Farm, Folkstone Road, Dover, Kent

Dover Industrial Open Storage, Great Farthingloe Farm, Folkestone Road, Dover, CT15 7AA

Exceptional Southeast Industrial Site – Open Storage and Parking

Tenure	To Let
Available Size	0.25 to 3.10 Acres / 0.10 to 1.25 Hectares
Rent	£1.75 per sq ft
Business Rates	N/A
EPC Rating	Upon enquiry

- Open Storage Opportunity
- Self Designated Access
- Newly Surfaced
- Up to 3.1 Acres
- 24 Hour Access
- Excellent Transport Links

Description

Just 6.1 miles from the J13 of the M20 and directly off the A20, this secure 3.1-acre site provides an unbeatable balance of location, flexibility, and value.

Featuring a durable hardstanding palisade surface, the site can be easily subdivided to suit occupier requirements. Historically used for large-scale vehicle parking, it is perfectly suited for open storage, logistics, and vehicle storage operations.

With its competitive leasing potential, easy access to major transport routes, and proven suitability for high-volume parking, this site offers a cost-effective and practical solution for businesses seeking secure, well-located space in the South East.

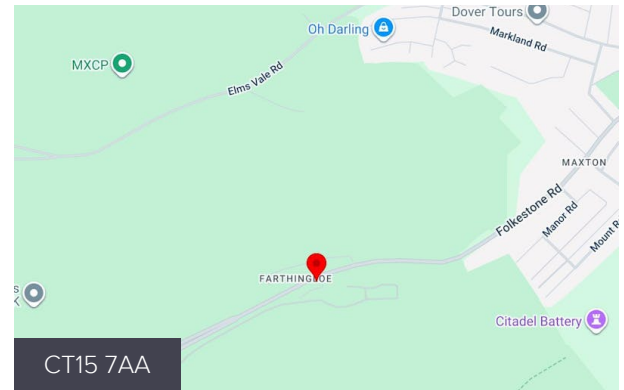
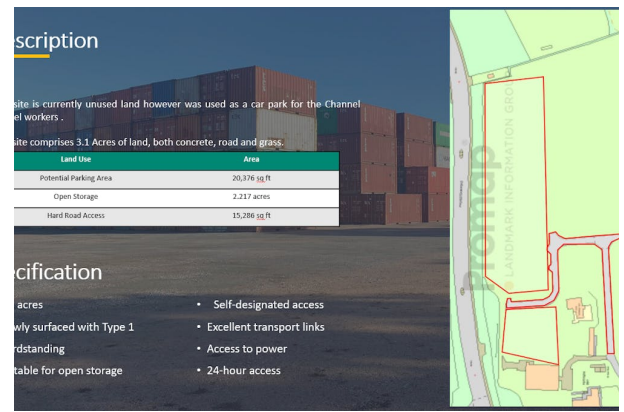
Location

Great Farthingloe Farm sits just 1.5 miles west of Dover, off Folkestone Road (B2011). With direct linkage to the A20 and the M20, it offers swift access toward London—and is only approximately 6 miles from the Channel Tunnel. That proximity makes the site an exceptional strategic asset for logistics, storage, and cross-Channel operations

Accommodation

The accommodation comprises the following areas:

Name	Description	Size	sq m	Availability
Outdoor - Parking Area	Parking Area	20,376 sq ft	1,892.99	Available
Outdoor - Open Storage	Open Storage	2.22 Acres	8,971.88	Available
Outdoor - Hard Road Access	Hard Road Access	15,286 sq ft	1,420.12	Available
Total			12,284.99	



Viewing & Further Information

Joe Salisbury

07809399946

joe.salisbury@m1agency.co.uk

Sophie Cordery

07825 380 457

sophie.cordery@m1agency.co.uk

Jonjo Lyles

0203 824 9417 | 07388 488 252

jonjo.lyles@m1agency.co.uk