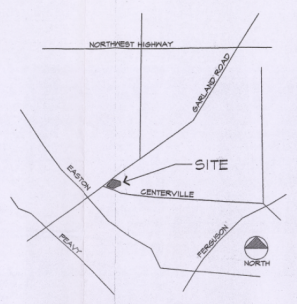
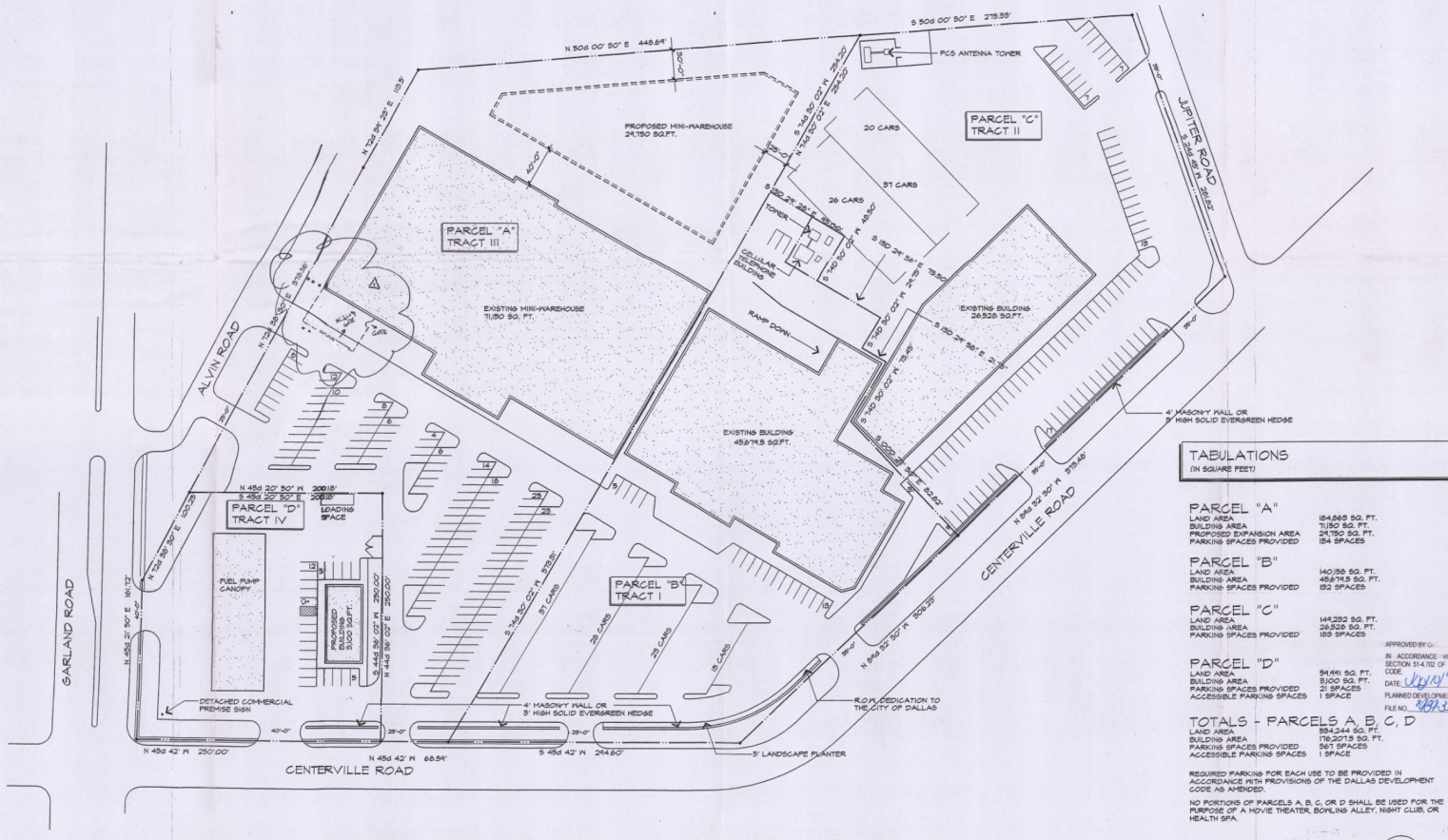


15 TYPICAL PARKING STRIPING  
NO SCALE



16 AREA MAP  
NOT TO SCALE



TABULATIONS  
(IN SQUARE FEET)

<b>PARCEL "A"</b>	LAND AREA: 54,068 SQ. FT. BUILDING AREA: 21,802 SQ. FT. PROPOSED EXPANSION AREA: 24,750 SQ. FT. PARKING SPACES PROVIDED: 84 SPACES
<b>PARCEL "B"</b>	LAND AREA: 140,180 SQ. FT. BUILDING AREA: 456,745 SQ. FT. PARKING SPACES PROVIDED: 82 SPACES
<b>PARCEL "C"</b>	LAND AREA: 144,282 SQ. FT. BUILDING AREA: 28,528 SQ. FT. PARKING SPACES PROVIDED: 122 SPACES
<b>PARCEL "D"</b>	LAND AREA: 54,941 SQ. FT. BUILDING AREA: 500 SQ. FT. PARKING SPACES PROVIDED: 21 SPACES ACCESSIBLE PARKING SPACES: 1 SPACE
<b>TOTALS - PARCELS A, B, C, D</b>	LAND AREA: 393,471 SQ. FT. BUILDING AREA: 16,207.5 SQ. FT. PARKING SPACES PROVIDED: 187 SPACES ACCESSIBLE PARKING SPACES: 1 SPACE

REQUIRED PARKING FOR EACH USE TO BE PROVIDED IN ACCORDANCE WITH PROVISIONS OF THE DALLAS DEVELOPMENT CODE AS AMENDED.  
NO PORTIONS OF PARCELS A, B, C, OR D SHALL BE USED FOR THE PURPOSE OF A MOVIE THEATER, BOWLING ALLEY, NIGHT CLUB, OR HEALTH SPA.

05 DEVELOPMENT PLAN - PLANNED DEVELOPMENT DISTRICT 7-D  
SCALE: 1"=50'-0"