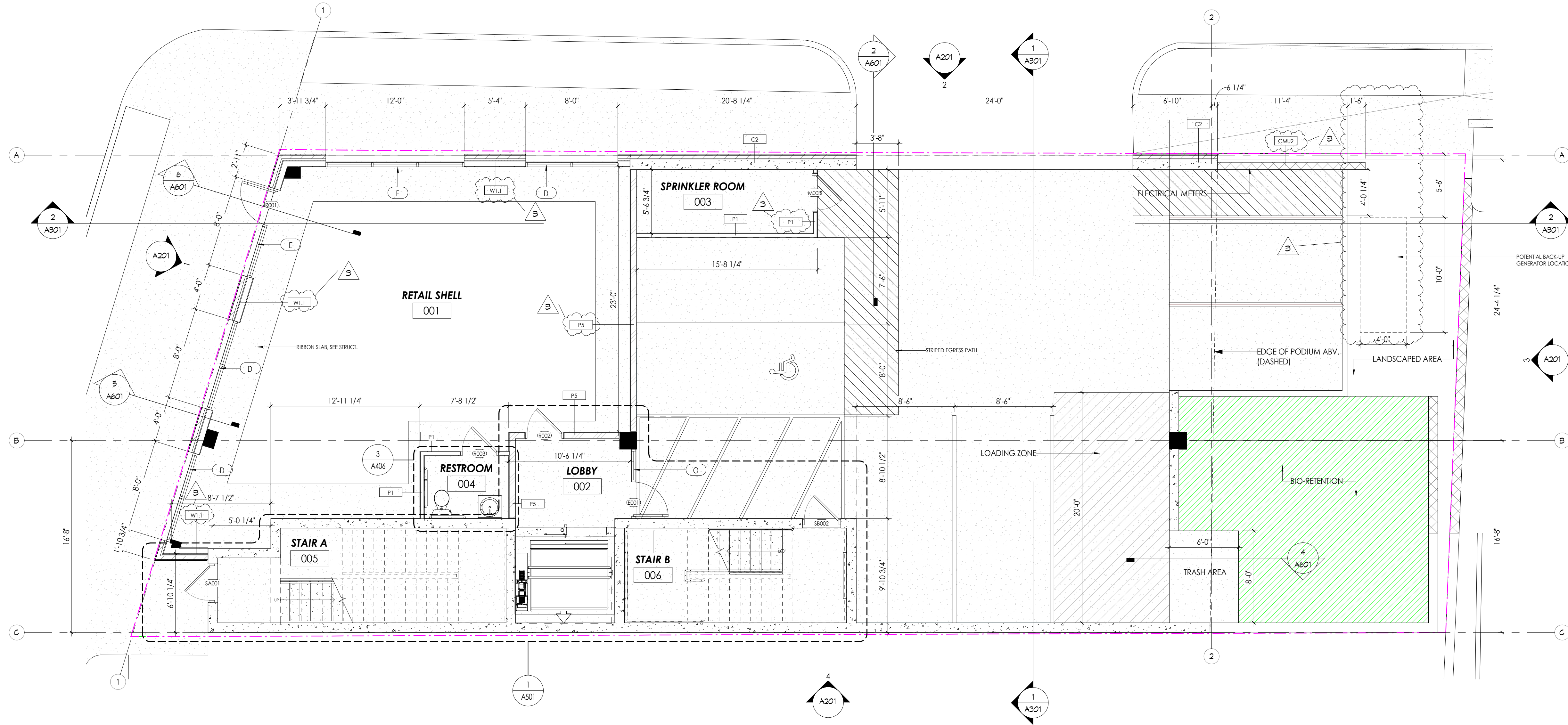


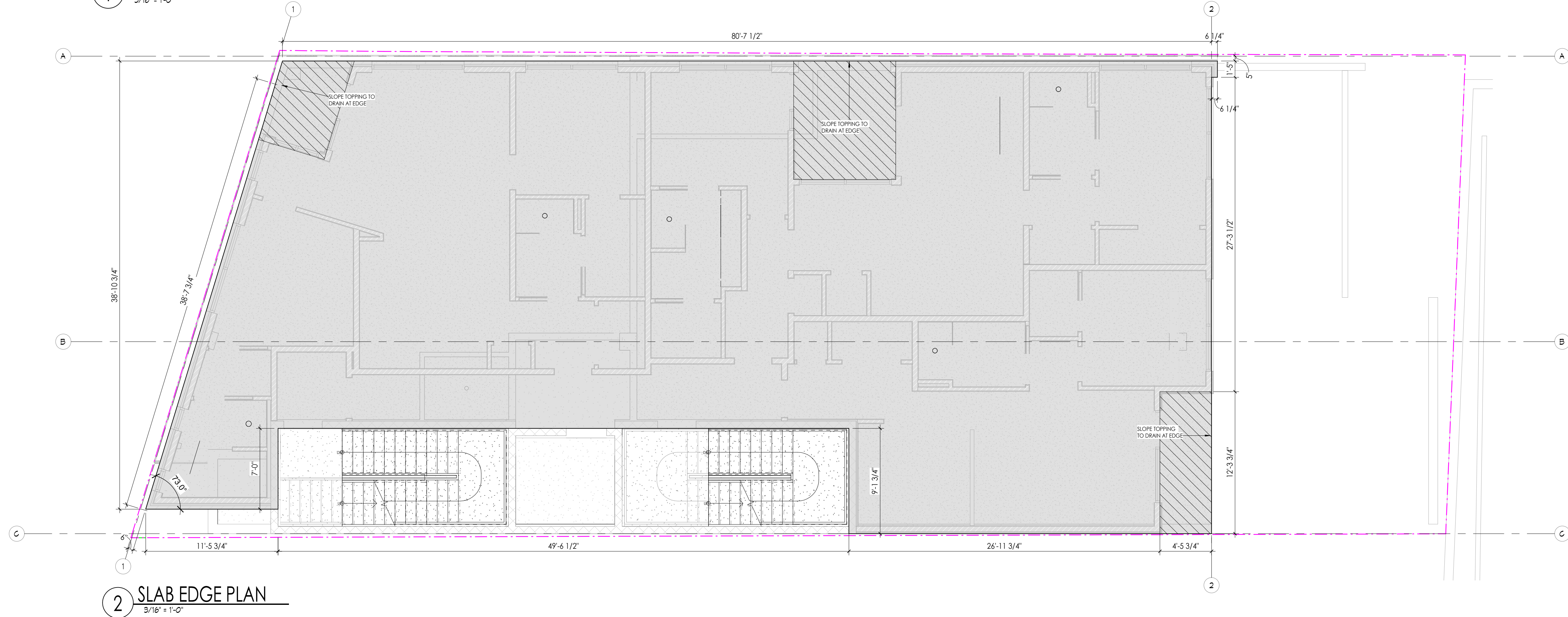
918 MAIN SITE PLAN

918 MAIN ST
NASHVILLE, TN 37206

ISSUED FOR CONSTRUCTION



1 01 - GROUND LEVEL PLAN
3/16" = 1'-0"



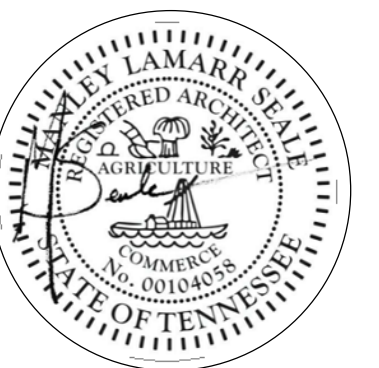
2 SLAB EDGE PLAN
3/16" = 1'-0"

REVISIONS

1	ADDENDUM 01	04/23/2021
2	REVISION 01	05/21/2021
3	REVISION 02	07/19/2021

GENERAL PLAN NOTES

- ALL DIMENSIONS ARE MEASURED FROM STUD TO STUD, UNLESS NOTED OTHERWISE. IT IS THE CONTRACTOR'S RESPONSIBILITY TO NOTIFY ARCHITECT OF SPECIFIC DIMENSION DISCREPANCIES TO OBTAIN DIMENSION CLARIFICATION AND APPROVAL TO PROCEED.
- CENTERLINE OF NEW PARTITIONS SHOULD ALIGN WITH CENTERLINE OF PERIMETER WINDOW MULLIONS, UNLESS NOTED OTHERWISE.
- CONTRACTOR TO PROVIDE AND LOCATE FIRE RETARDANT WOOD BLOCKING WITHIN PARTITIONS AT ALL LOCATIONS THAT REQUIRE SUPPORT.

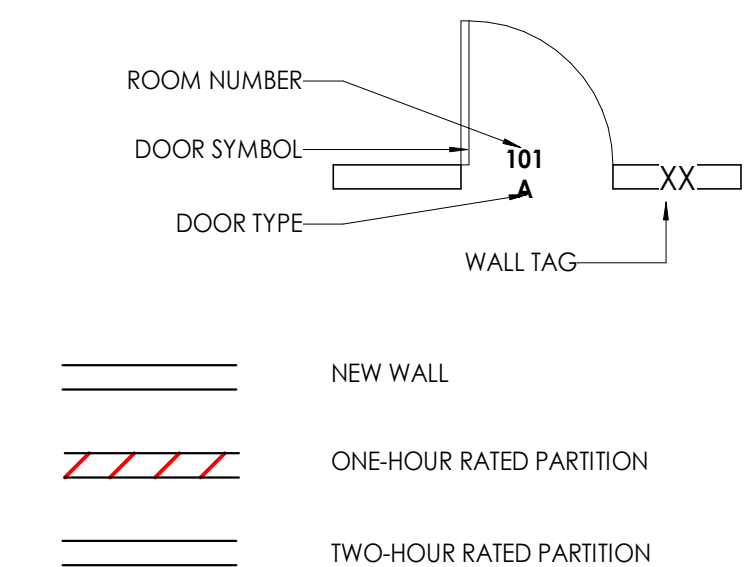


PROJECT #: 20079

ISSUED: 22 FEBRUARY 2021

DRAWN BY: PABS

GRAPHIC SYMBOLS



OVERALL FLOOR PLANS

A111