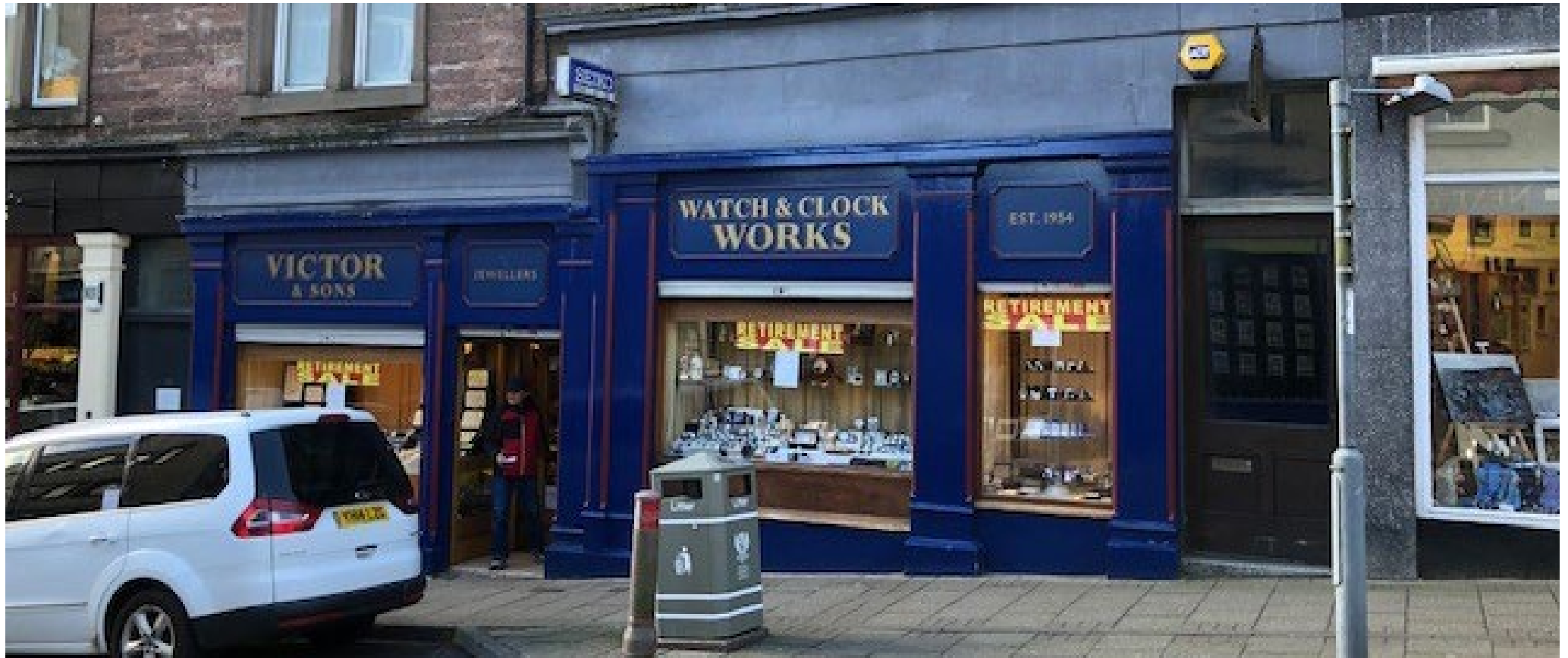


FOR SALE
RETAIL/CLASS 1A

**GRAHAM
SIBBALD**



32-34 Allan Street
Blairgowrie
PH10 6AD

- Double Fronted Retail Unit
- Prominent Town Centre Location
- Available as a Whole
- Extends to 97 sq.m. / 1,044 sq.ft.
- May Qualify for 100% Rates Relief
- Offers in Region of £85,000

