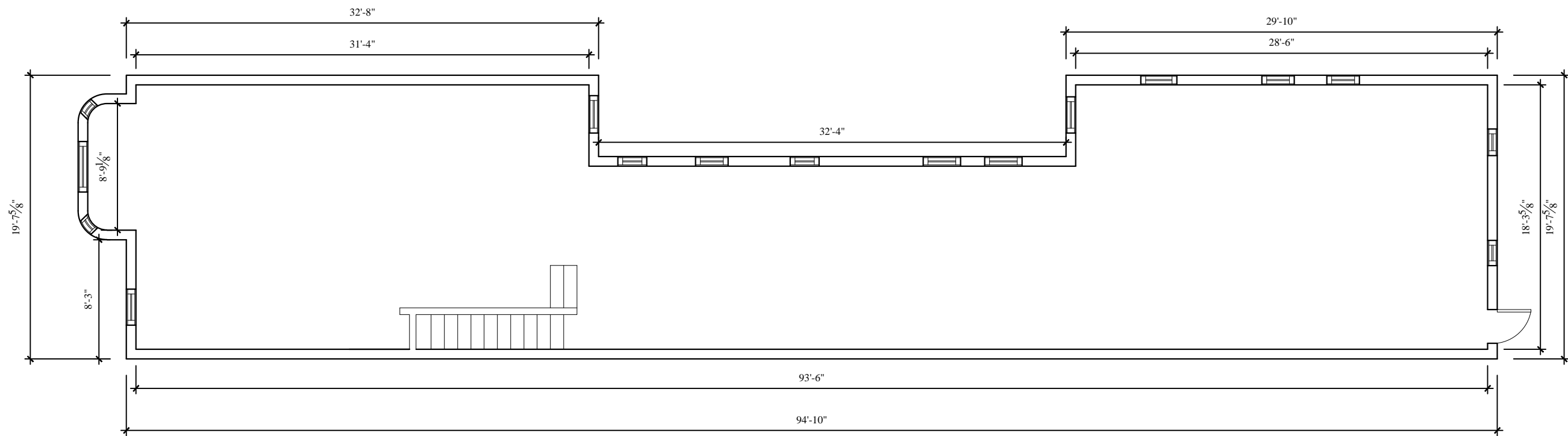




1201 HAMLIN STREET N.E. 20017

1830 14TH STREET WASHINGTON, DC 20009



1 EXISTING SECOND FLOOR  
SCALE: 1/8"=1'-0"

REV	REVISION	DATE
-----	----------	------

REVISIONS

CLIENT: JIAO KING INC

DRAWN BY: O.A  
CHECKED BY: O.A.  
DATE: 12TH SEPTEMBER 2012