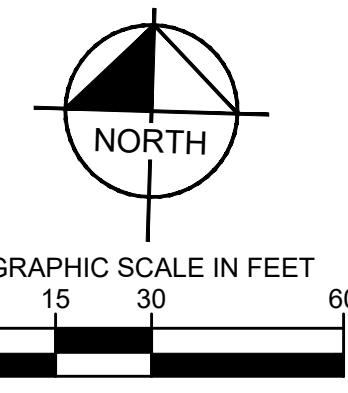
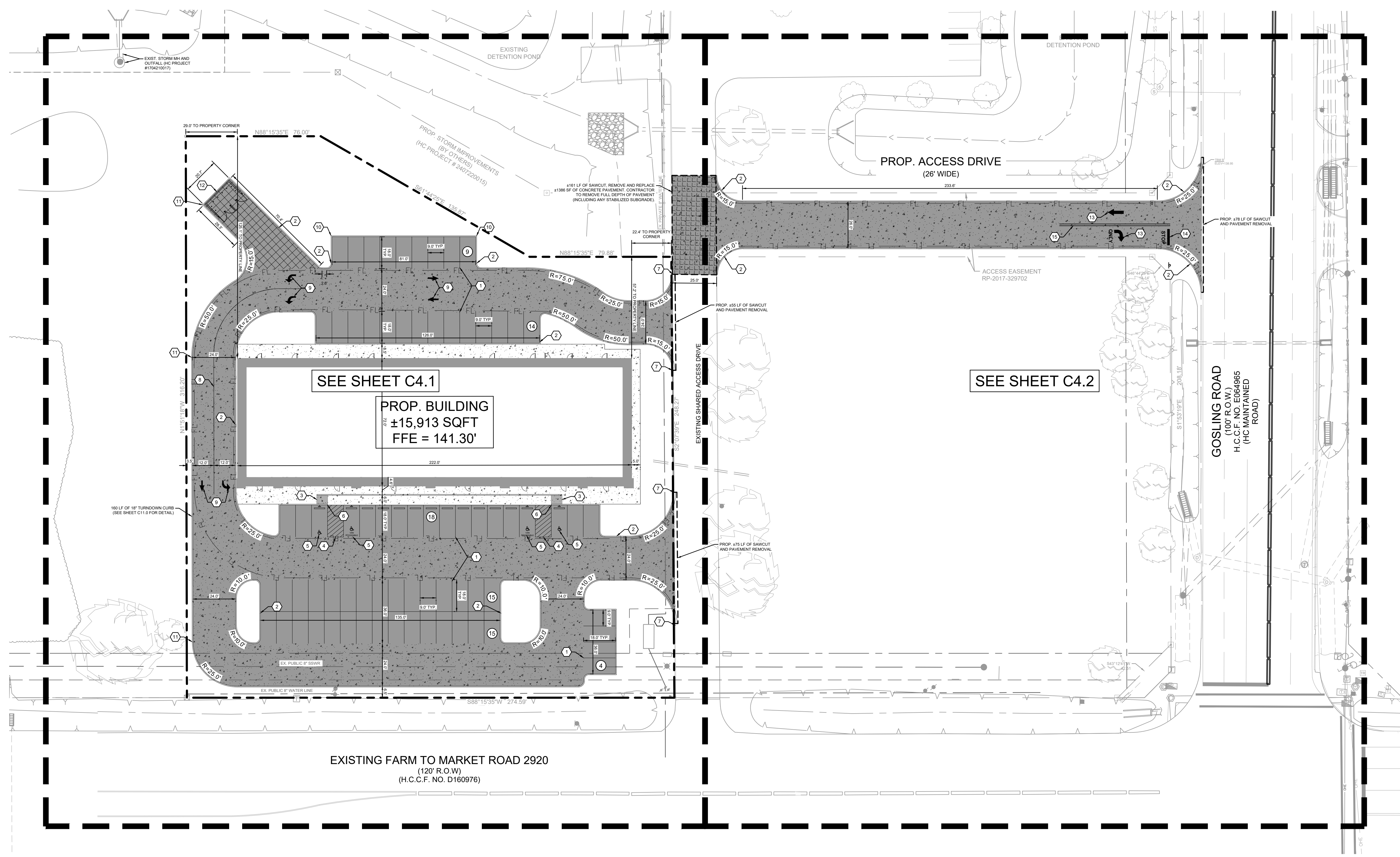


Plotted By: Reutzell, Eric. Sheet Section: Layout: C4.0 January 20, 2025 04:23:27pm \\mimley-horn.com\is...  
 This document, together with the concepts and designs presented herein, as an instrument of service, is intended only for the specific purpose and client for which it was prepared. Reuse of and improper reliance on this document without written authorization and adaptation by Kimley-Horn and Associates, Inc. shall be without liability to Kimley-Horn and Associates, Inc.



LEGEND	
---	PROPERTY LINE
FL	FIRE LANE STRIPING
④	PARKING COUNT
▢	CURB RAMP NOT IN PUBLIC ROW
♿	ACCESSIBILITY SPACE
---	SAWCUT LINE
PAVING MATERIAL LEGEND	
▨	SIDEWALK PAVEMENT (REF. SHEET C11.0 FOR DETAIL)
▩	PROPOSED LIGHT DUTY CONCRETE PAVEMENT (REF. SHEET C11.0 FOR DETAIL)
▪	PROPOSED MEDIUM DUTY CONCRETE PAVEMENT (REF. SHEET C11.0 FOR DETAIL)
▫	PROPOSED HEAVY DUTY CONCRETE PAVEMENT (REF. SHEET C11.0 FOR DETAIL)
▬	REMOVE AND REPLACE CONCRETE PAVEMENT

KEYED NOTES	
①	PARKING LOT STRIPING, 4" SOLID WHITE STRIPE
②	PROPOSED 6" CURB.
③	ACCESSIBLE RAMP
④	4" SOLID WHITE STRIPING, 2'-0" O.C. @ 45°
⑤	PROPOSED ACCESSIBLE HC PARKING STALL WITH ACCESSIBLE PARKING SYMBOL AND SIGN
⑥	END OF 6" CURB. INSTALL CURB TERMINATION.
⑦	PROPOSED 6" CURB. TIE INTO EXISTING CURB.
⑧	4" SOLID WHITE STRIPING
⑨	DIRECTIONAL TRAFFIC ARROW (SEE SHEET C11.2 FOR DETAIL)
⑩	END SLOTTED CURB. BEGIN 6" CONCRETE CURB (SEE SHEET C11.0 FOR DETAIL)
⑪	END 18" TURN DOWN CURB. BEGIN 6" CONCRETE CURB (SEE SHEET C11.0 FOR DETAIL)
⑫	PROPOSED TRASH ENCLOSURE. (REF. ARCH. FOR DETAIL)
⑬	DIRECTIONAL TRAFFIC ARROW. (SEE SHEET C11.2 FOR DETAIL)
⑭	STOP BAR. (SEE SHEET C11.2 FOR DETAIL)
⑮	4" SOLID DOUBLE YELLOW STRIPING

GENERAL NOTES	
1.	DIMENSIONS ARE TO FACE OF CURB UNLESS OTHERWISE NOTED.
2.	ALL RADII 3' UNLESS OTHERWISE NOTED.
3.	REFER TO ARCHITECTURAL PLANS FOR SITE LIGHTING POLES AND FIXTURES AND ELECTRICAL PLAN PRIOR TO PLACING PAVEMENT.
4.	REFER TO ARCHITECTURAL PLANS FOR EXACT BUILDING DIMENSIONS.
5.	SIDEWALKS TO HAVE A 5% MAXIMUM RUNNING SLOPE AND A 2% MAXIMUM CROSS SLOPE IN ACCORDANCE WITH ADA REQUIREMENTS.
6.	FIELD VERIFY ADA GRADES PRIOR TO PLACING PAVEMENT. CONTRACTOR SHALL CONSTRUCT ALL ACCESSIBLE ROUTES IN ACCORDANCE WITH ADA STANDARDS AND T&S.
7.	REF. IRRIGATION PLANS PRIOR TO PLACING PAVEMENT.
8.	CONTRACTOR SHALL BUDGET FOR ACCESSIBLE STALL STRIPING, FIRE LANE STRIPING, DIRECTIONAL ARROWS, ETC.
9.	SITE LIGHTING IS BY OTHERS. REF. SITE LIGHTING PLANS FOR LOCATIONS AND DETAILS PRIOR TO PLACING PAVEMENT.
10.	REF. BUILDING PLANS FOR ALL EXTERIOR STAIR DETAILS.
11.	CONTRACTOR TO ADJUST EXISTING SANITARY SEWER MANHOLES, STORM SEWER MANHOLES, ELECTRICAL MANHOLES, FIRE HYDRANTS, VALVE BOXES, WATER METERS, ETC. TO MATCH PROPOSED FINISHED GRADES IF NECESSARY.

PARKING SUMMARY	
PARKING PROVIDED	
STANDARD STALLS PROVIDED	71
ACCESSIBLE STALLS PROVIDED	4
TOTAL STALLS PROVIDED	75



Know what's below.  
Call before you dig.

**CAUTION!!**

EXISTING UNDERGROUND UTILITIES IN THE AREA CONTRACTOR IS RESPONSIBLE FOR DETERMINING THE HORIZONTAL AND VERTICAL LOCATION OF ALL UTILITIES PRIOR TO CONSTRUCTION. CONTRACTOR SHALL BE RESPONSIBLE FOR ANY REPAIRS TO EXISTING UTILITIES DUE TO DAMAGE INCURRED DURING CONSTRUCTION. CONTRACTOR SHALL NOTIFY THE ENGINEER OF ANY DISCREPANCIES ON THE PLANS.

NO.	REVISIONS	DATE	BY

**Kimley»Horn**  
 © 2025 KIMLEY-HORN AND ASSOCIATES, INC.  
 11233 SHADOW CREEK PARKWAY, SUITE 450, PEARLAND, TX 77584  
 PHONE: 281-895-1210  
 WWW.KIMLEY-HORN.COM  
 TBPE FIRM REGISTRATION F-928

STATE OF TEXAS  
 MUNIR ALJAJAKLI  
 148631  
 LICENSED PROFESSIONAL ENGINEER  
 01/20/2025

KHA PROJECT	064589711
DATE	01/20/2025
SCALE	AS SHOWN
DESIGNED BY	MA
DRAWN BY	AKG
CHECKED BY	MA

**OVERALL DIMENSION CONTROL PLAN**

**ASHTON GRAY**  
**SPRING RETAIL**  
 PREPARED FOR  
**ASHTON GRAY**  
 TEXAS  
 SPRING