

BEECHFIELD HOUSE

SPECIFICATION

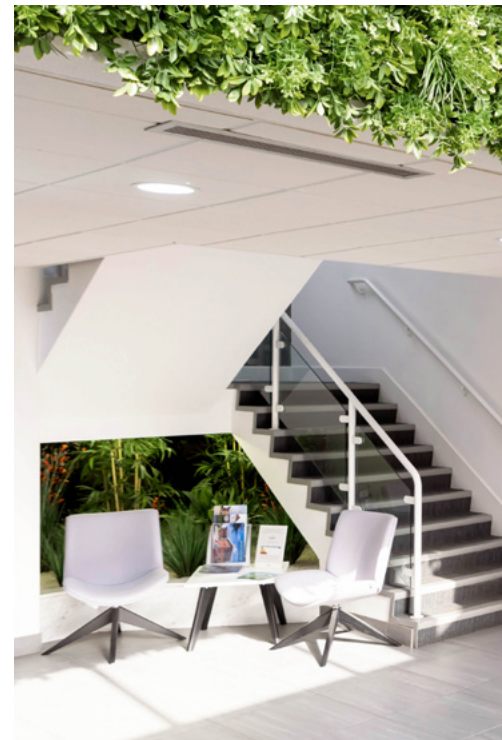
- Perimeter heating
- Refurbished to a high standard
- Suspended ceilings
- LED lighting
- 8 person passenger lift
- Modern fully fitted kitchen facilities
- Carpeted throughout
- Double glazed
- On-site parking
- Male, female, disabled WC's and shower facilities
- Monitored 24-hour access control with CCTV
- High quality fixtures, fittings and finishes

TENURE

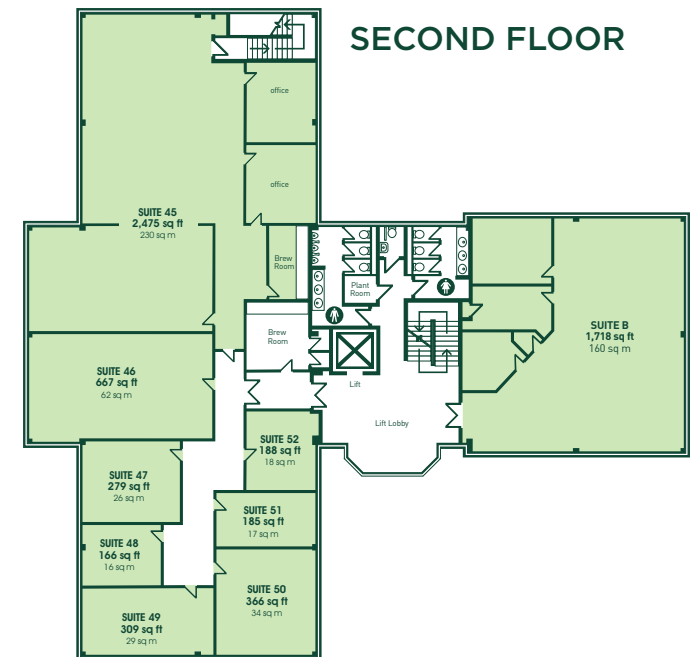
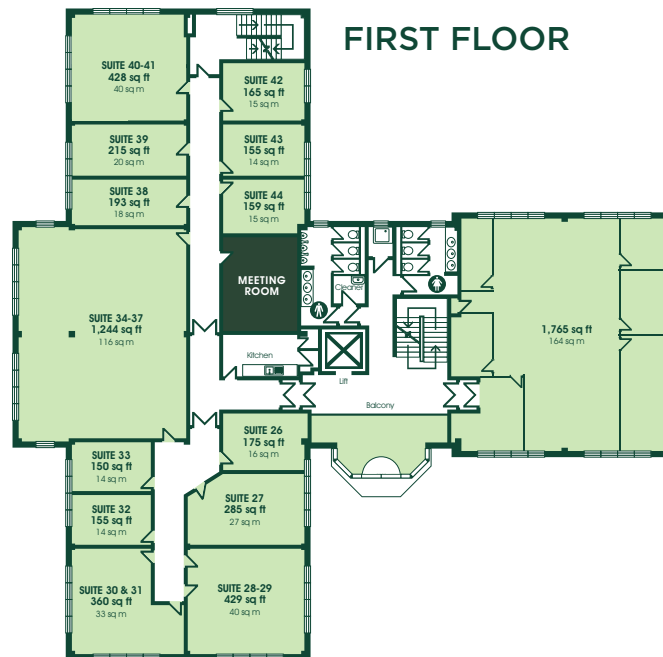
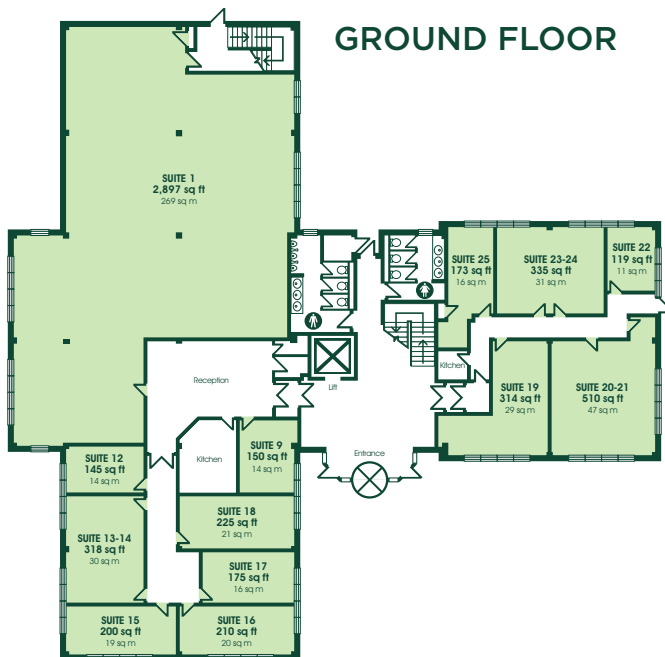
The office suites are available on either short term managed licences or longer term leases.

EPC

Beechfield House has an Energy Performance Certificate rating of C68.



Orbit
SPACES



BEECHFIELD HOUSE

MANAGED OFFICE SUITES
FROM 1 - 25 PEOPLE

LOCATED AT THE HEART OF
LYME GREEN BUSINESS PARK MACCLESFIELD

QUALITY OFFICE SPACE FROM 1 PERSON+

FOR FURTHER INFORMATION

01625 588200

www.orbit-developments.co.uk

Orbit
Developments

DISCLAIMER: Whilst the statements contained in these particulars are given in good faith and as a general guide to the property, they do not form any part of an offer or contract. Neither the Lessor or their Agents can accept responsibility for them. Interested parties must satisfy themselves by inspection, or otherwise, as to the correctness of these particulars. (0325)