

17C Curzon Street, London W1J 5HU

PRIME MAYFAIR 5TH & 6TH FLOOR OFFICES



- Fitted and Furnished
- Boardroom
- 12 Desks
- Informal Seating/Reception
- Kitchen
- Air Conditioning
- LED Lighting
- Commissionaire
- Excellent Natural Light
- Passenger Lift
- WCs

For further information please contact:

Katrina Love

T: 07818 290 253

E: katrinalove@brayfoxsmith.com

Harry Bray-Smith

T: 07345 600 278

E: harrybraysmith@brayfoxsmith.com

42-48 Great Portland St,
London
W1W 7NB

brayfoxsmith.com

17C Curzon Street, London W1J 5HU

Location

Located on the north side of Curzon Street close to the junction of Chesterfield Street. 17C Curzon Street is in close proximity to both Park Lane and Berkeley Square and is situated north of Shepherd’s Market.

The location is internationally renowned for its high-end fashion, luxury hotels and popular restaurants.

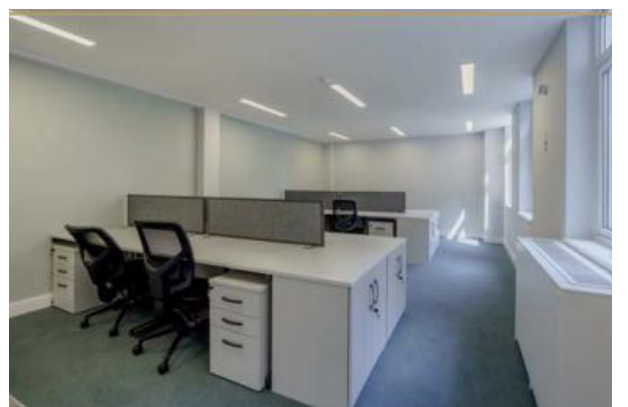
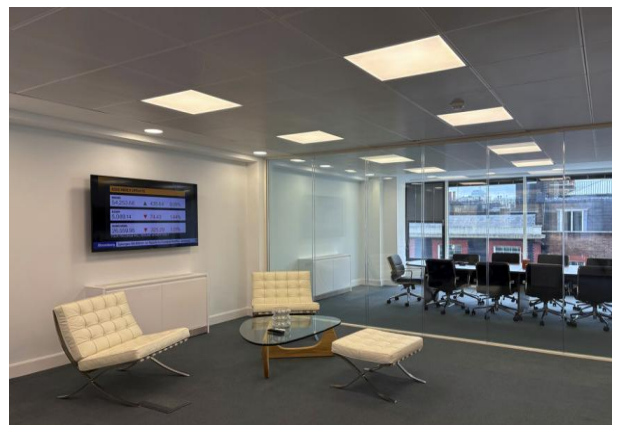
Green Park Underground Station (Piccadilly, Victoria and Jubilee lines) and Hyde Park Corner (Piccadilly line) are both a 5-minute walk from the property. Bond Street Station (Elizabeth, Central and Jubilee lines) is within a 10-minute walk.

There are several bus routes nearby providing travel across Central London.

Description

Prestigious fitted and furnished 5th floor office with stunning views in the heart of Mayfair. The 6th floor is currently open-plan but can be fitted to suit requirements. The floor benefits from:

- Boardroom
- 12 Desks in an open plan working space
- Informal seating/reception area
- Kitchen
- Air conditioning
- LED Lighting
- Commissionaire
- Passenger lift
- WCs



Floor	Sq Ft	Sq m
6th	1,269	117.89
5 th	1,424	132.29

For further information please contact:

Katrina Love

T: 07818 290 253

E: katrinalove@brayfoxsmith.com

Harry Bray-Smith

T: 07345 600 278

E: harrybraysmith@brayfoxsmith.com

42-48 Great Portland St,
London
W1W 7NB

brayfoxsmith.com

17C Curzon Street, London W1J 5HU

Terms

A new lease direct from the Landlord for a term by arrangement

Rent

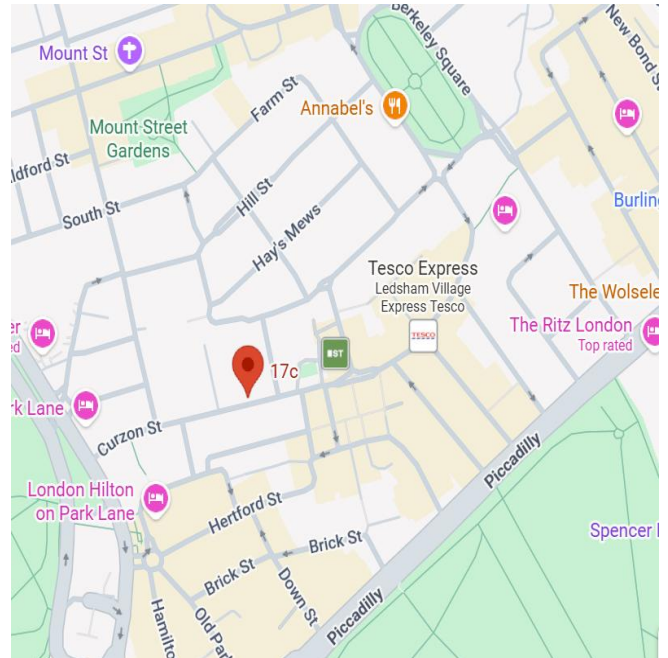
£130 per sq ft

Business Rates

£39.44 per sq ft

Service Charge

£16.53 per sq ft



For further information please contact:

Katrina Love

T: 07818 290 253

E: katrinalove@brayfoxsmith.com

Harry Bray-Smith

T: 07345 600 278

E: harrybraysmith@brayfoxsmith.com

42-48 Great Portland St,
London
W1W 7NB

brayfoxsmith.com