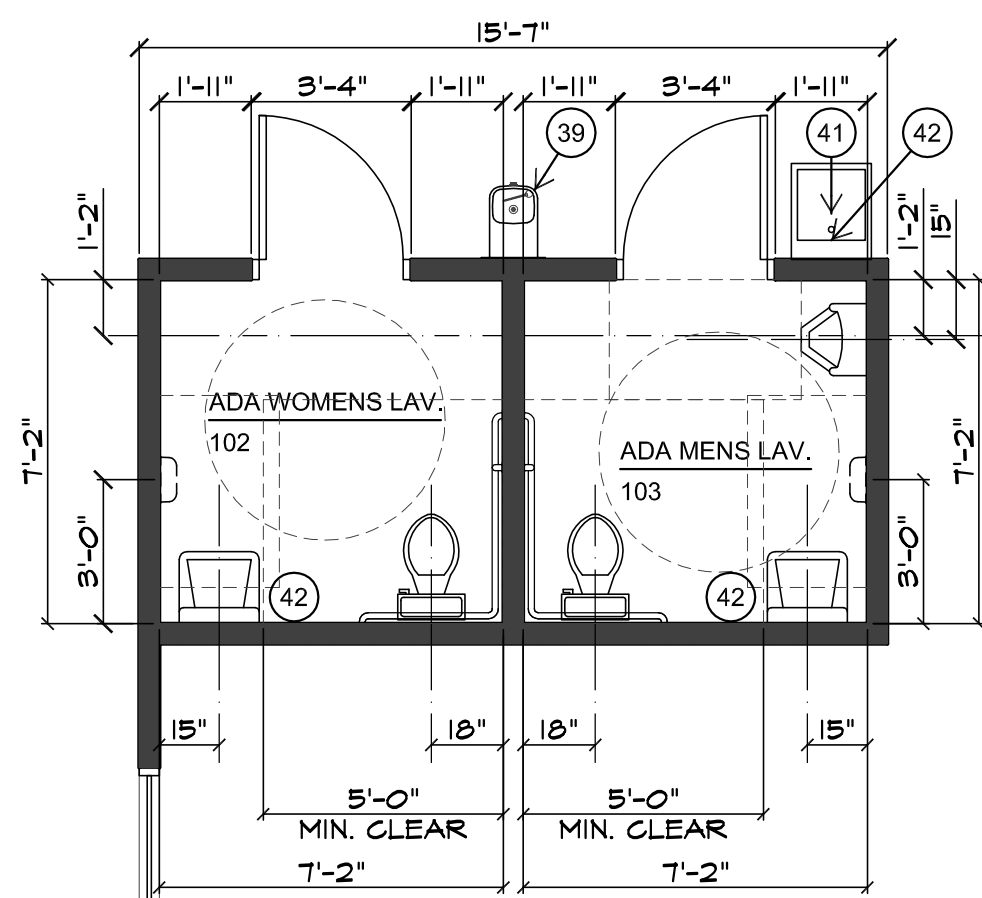


KEYED NOTES

- 1 EXIST. EXTERIOR WALLS TO REMAIN, PREP TO RECEIVE NEW MET. STUD FURRINS, INSULATION & GNB
- 2 EXIST. CMU WALLS TO REMAIN; REMOVE ANY OBSTRUCTIONS & PREP TO RECEIVE NEW PAINT FINISHES (TYP.)
- 3 EXIST. WALLS TO REMAIN; PATCH AS REQ'D FOR NEW FINISHES
- 4 EXIST. DOOR TO REMAIN, FIELD VERIFY CONDITION FOR REUSE (INSTALL PANIC HARDWARE & CLOSER IF REQ'D & NOT IN PLACE) SEE DOOR SCHEDULE, RE-KEY AS PER OWNERS DIRECTIVE
- 5 EXIST. DOORS TO REMAIN, FIELD VERIFY CONDITION FOR REUSE
- 6 EXIST. CONC. FLOOR TO REMAIN; REMOVE ANY OBSTRUCTIONS FROM DEMO WORK & CONC. PATCH AS REQ'D FOR LEVEL FLOOR
- 7 EXIST. MET. DECK & BAR JOISTS ABOVE TO REMAIN, REMOVE ANY UNUSED CONDUIT, WIRING & PIPING FROM STRUCTURE & PREP FOR NEW PAINT FINISH
- 8 EXIST. MET. DECK & BAR JOISTS ABOVE TO REMAIN, REMOVE ANY UNUSED CONDUIT, WIRING & PIPING FROM STRUCTURE & PREP FOR NEW CEILING SYSTEM
- 9 EXISTING COLUMNS TO REMAIN; SCRAPE SAND & PAINT
- 10 EXISTING WINDOW TO REMAIN
- 11 EXISTING EXTERIOR CONC. STEPS, LANDINGS & RAILING TO REMAIN; H.M. RAILINGS PAINT TO BE TOUCHED UP IF REQUIRED
- 12 EXISTING EXTERIOR CONC. RAMP TO REMAIN ; OVERPOUR W/ NEW REINFORCED CONC. TO ENLARGE LANDINGS FOR O.H. & MAN DOOR + OVERPOUR RAMP TO MEET NEW SLOPE; SEE STRUCTURAL DWGS.
- 13 RE-WORK EXIST. MET. PIPE RAILING TO ACCOMMODATE NEW LAYOUT & RAMP SLOPE
- 14 EXIST. CMU SCREEN WALL TO REMAIN;
- 15 NEW COLS. FOR NEW DOCK CANOPY ABOVE; SEE STRUCTURAL DWGS.
- 16 CUT EXIST. MET. PIPE RAILINGS DOWN TO DOCK; SLEEVE RAIL 8" INTO EXIST. DOCK W/ PIPE SLEEVES SET 12" BACK FROM DOCK EDGE & PATCH HOLE FROM DEMO TO ACCESS NEW LOADING DOCK.
- 17 NEW MET. 8'-0" W X 10'-0" HIGH ROLL UP O.H. DOOR
- 18 NEW MET. 8'-0" W X 10'-0" FOLDING SECURITY GRATE @ O.H. DOOR
- 19 NEW M.O. FOR ROLL UP DOOR SEE STRUCTURAL DWG. FOR NEW LINTEL
- 20 NEW 4'-0" W X 4'-0" HIGH FIXED ALUM. ISUL. WINDOW TO MATCH BLDG STANDARD
- 21 NEW M.O. FOR NEW WINDOW; SEE STRUCTURAL DWGS. FOR NEW LINTEL
- 22 NEW M.O. FOR 3'-0" X 7'-0" DOOR, SEE STRUCTURAL DWGS. FOR NEW LINTEL
- 23 REMOVE EXIST. INTERIOR PARTITION WALLS DISCONNECT ANY POWER SOURCES + INVESTIGATE FOR PIPING, CHASES & DUCTWORK PRIOR TO DEMOLITION
- 24 REMOVE EXIST. DOOR & FRAME
- 25 REMOVE EXIST. REINFORCED CONC. CAP ABOVE PRIOR TO REMOVING INTERIOR CMU WALL; V.I.F.
- 26 REMOVE ALL EXIST. RECTANGLES, ELECTRICAL PANELS, METERS ETC., NOT TO BE USED IN NEW (AUTOPART INTERNATIONAL) FLOOR PLAN FIELD VERIFY W/ DESIGN BUILD ELECTRICAL SUBCONTRACTOR & ARCHITECT IF ANY COMPONENTS NEED TO BE RELOCATED THAT CONFLICT W/ NEW LAYOUT
- 27 REMOVE EXIST. LIGHTING FIXTURES, JUNCTION BOXES & WIRING; V.I.F. W/ DESIGN BUILD ELECTRICAL SUBCONTRACTOR & ARCHITECT IF ANY COMPONENTS NEED TO REMAIN
- 28 REMOVE EXIST. PLUMBING FIXTURES, CAP OFF SUPPLY & WASTE LINES (COORDINATE W/ PLUMBING CONTRACTOR FOR EXTENT IF ANY) OF PIPING TO REMAIN
- 29 REMOVE EXIST. PLUMBING METERS ETC. IF APPLICABLE (COORDINATE W/ PLUMBING CONTRACTOR FOR EXTENT OF PIPING TO REMAIN)
- 30 REMOVE EXIST. HVAC DUCTWORK NOT TO BE REUSED FOR NEW AUTOPART INTERNATIONAL FLOOR PLAN V.I.F.
- 31 REMOVE SECTION OF EXIST. CMU WALL FOR ENLARGED OPENING V.I.F. IF STRUCTURAL OR LINTEL IS REQ'D
- 32 NEW FULL HGT. WALL (TYP.) - SEE WALL TYPE DWG. A-2 (MET. STUDS TO 12'-0" A.F.F.)
- 33 LINE OF EXIST. DEMISING WALL TO SEPARATE TENANTS; FINISH BOT/4'-0" W/ 6PW & SOUND BATT FOLLOWING ELEC. WIRING
- 34 LINE OF NEW DEMISING WALL TO SEPARATE TENANTS; LEAVE BOT/4'-0" 6PW OFF @ ADJACENT SPACE FOR FUTURE ELEC. WIRING
- 35 NEW DOOR & FRAME (TYP.) - SEE DOOR & FRAME TYPES TYPE DWG. A-4
- 36 NEW 4'-0" W X 4'-0" HIGH INTERIOR FIXED WINDOW
- 37 NEW ADA MENS LAV; SEE ENLARGED PLAN 2/A-1 & INTERIOR ELEVATIONS
- 38 NEW ADA WOMENS LAV; SEE ENLARGED PLAN 2/A-1 & INTERIOR ELEVATIONS
- 39 WALL MTD. WATER COOLER BARRIER FREE ADA COMPLIANT; ELKAY VRCHDTL&SC
- 40 FIRE EXTINGUISHER & BRACKET W/ APPROVED FIRE EXTINGUISHER, T/ EXTINGUISHER MOUNTED @ 3'-6" A.F.F.
- 41 MUSTEE' 19" WALL HUNG LAUNDRY TUB W/ HOT/COLD HOSE BIB BELOW
- 42 INSTA-HOT 'TANKLESS' UNDERSINK ELEC. WATER HEATER (TO SERVICE MENS & WOMENS LAVS. + LAUNDRY TUB & HOSE BIB)
- 43 EXIST. CONC. FLOOR TO REMAIN, REMOVE ANY OBSTRUCTIONS FROM DEMO WORK AND PREP FOR NEW FLOOR FINISHES
- 44 NEW SIGNAGE ABOVE, AS SUPPLIED BY AUTOPART INTERNATIONAL, PLACEMENT AS DIRECTED BY OWNER & ARCHITECT W/ BOROUGH APPROVAL

DOOR NOTES:

1. Entry lockset
2. Lockset
3. Privacy
4. 3 pair butt hinges
5. Surface mounted closer (suite side)
6. Panic Hardw are Device
7. All hardware to be stainless steel.
8. All handles to be lever type.
9. Flush w wood door
10. Undercut door 3/4"
11. Wall Stop
12. Floor Stop
13. 5"x20" glass lite



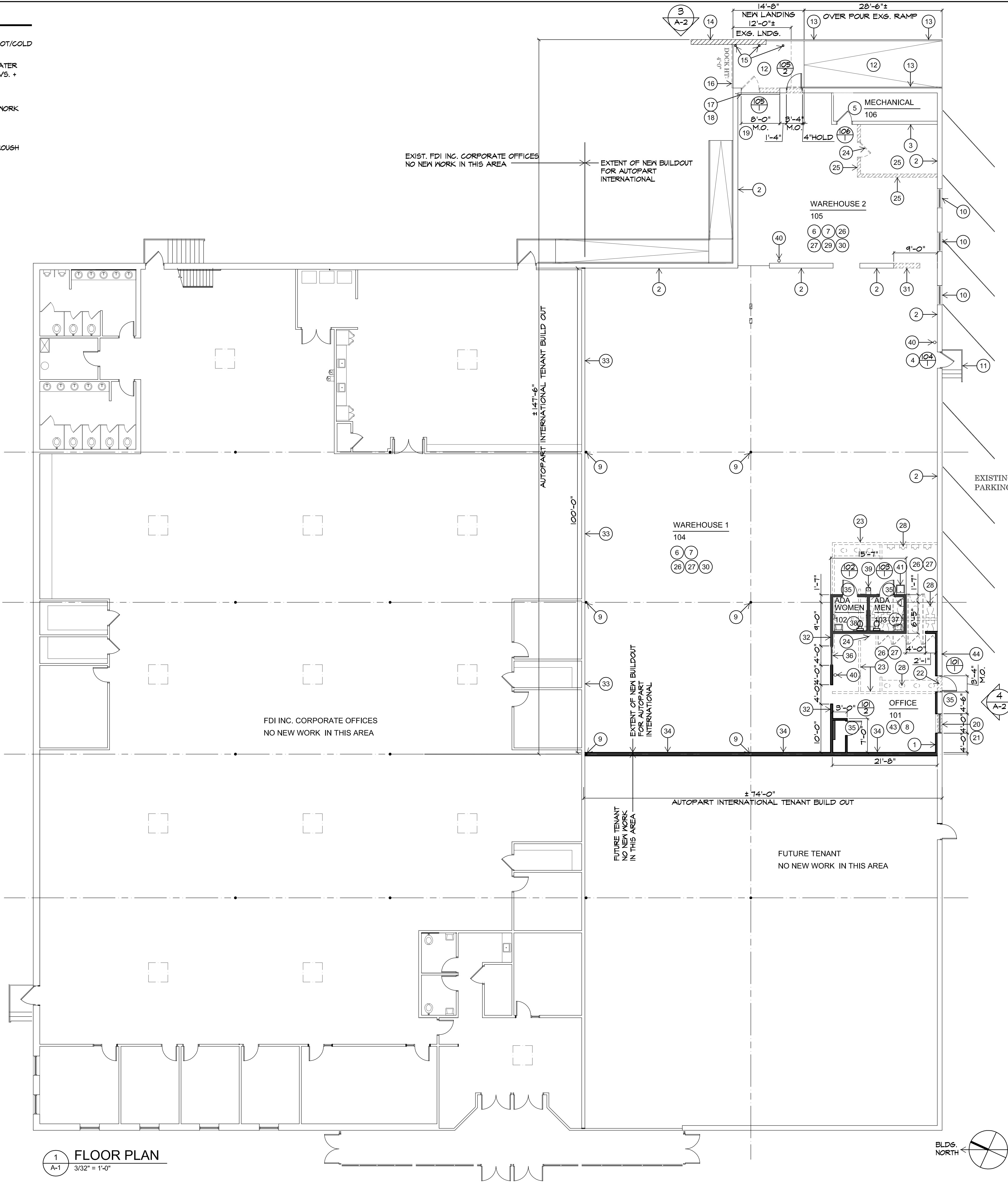
2 ENLARGED FLOOR PLAN space 102 & 103
A-1 1/4" = 1'-0"

Finish Schedule

RM. #	ROOM NAME	MAT'L	BASE	FIN.	NORTH WALL	EAST WALL	SOUTH WALL	WEST WALL	CEILING	HTG.	NOTES
101	OFFICE	VCT	RCB						ACoust. 9'-0"		
102	ADA WOMENS LAV.	VCT	RCB						ACoust. 8'-0"		
103	ADA MENS LAV.	VCT	RCB						ACoust. 8'-0"		
104	WAREHOUSE 1	EXIST.							EXIST. EXIST.		
105	WAREHOUSE 2	EXIST.							EXIST. EXIST.		
106	MECHANICAL ROOM	EXIST.							EXIST. EXIST.		

Door Schedule

NO.	NOMINAL DOOR SIZE	DOOR			FRAME			DETAILS			HDW SET	NOTES
		MAT'L.	FIN.	ELEV.	MAT'L.	FIN.	ELEV.	HEAD	JAMB	JAMB		
FIRST FLOOR												
101/1	3'-0" X 7'-0" X 1-3/4"	ALUM	ANOD	A	ALUM	ANOD	2					
101/2	3'-0" X 7'-0" X 1-3/4"	MET.	PAINT	B	MET.	PAINT	1					
102/1	3'-0" X 7'-0" X 1-3/4"	MET.	PAINT	B	MET.	PAINT	1					
103/1	3'-0" X 7'-0" X 1-3/4"	MET.	PAINT	B	MET.	PAINT	1					
104/1	3'-0" X 7'-0" X 1-3/4"	EXG MET	PAINT	EXG	EXG	PAINT	EXG					
105/1	8'-0" W X 10'-0" H ROLL UP DR	ALUM	FACTORY									
105/2	3'-0" X 7'-0" X 1-3/4"	MET.	PAINT	C	MET.	PAINT	1					
106/1	3'-0" X 7'-0" X 1-3/4"	EXIST.	PAINT	EXG	EXG	PAINT	EXG					



1 FLOOR PLAN
A-1 3/32" = 1'-0"

Issued: February 18, 2016
Rev. Date

kudravy architects, llc
215 W. Byham Ave., Suite 200
West Mifflin, PA 15120
Architecture • Planning • Interiors
Engineering • Construction Management
412.482.7818 fax

Alterations & Additions to
FDI, Inc. Bldg. / Tenant Area
7025 Clairton Road, West Mifflin, PA 15122
for
AUTOPART INTERNATIONAL
Offices & Warehouse Facility

First Floor Plan, Coded Notes &
Schedules