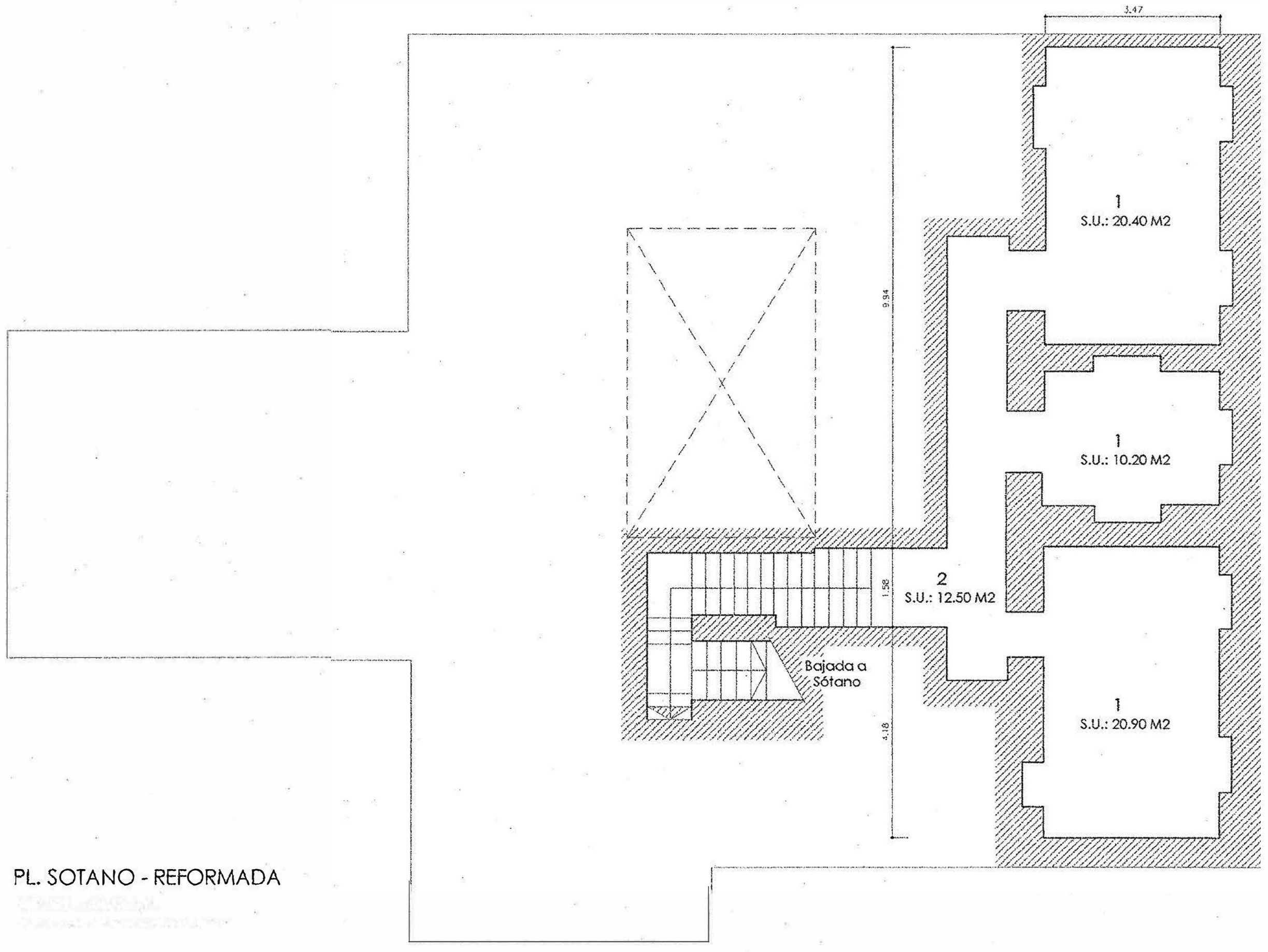
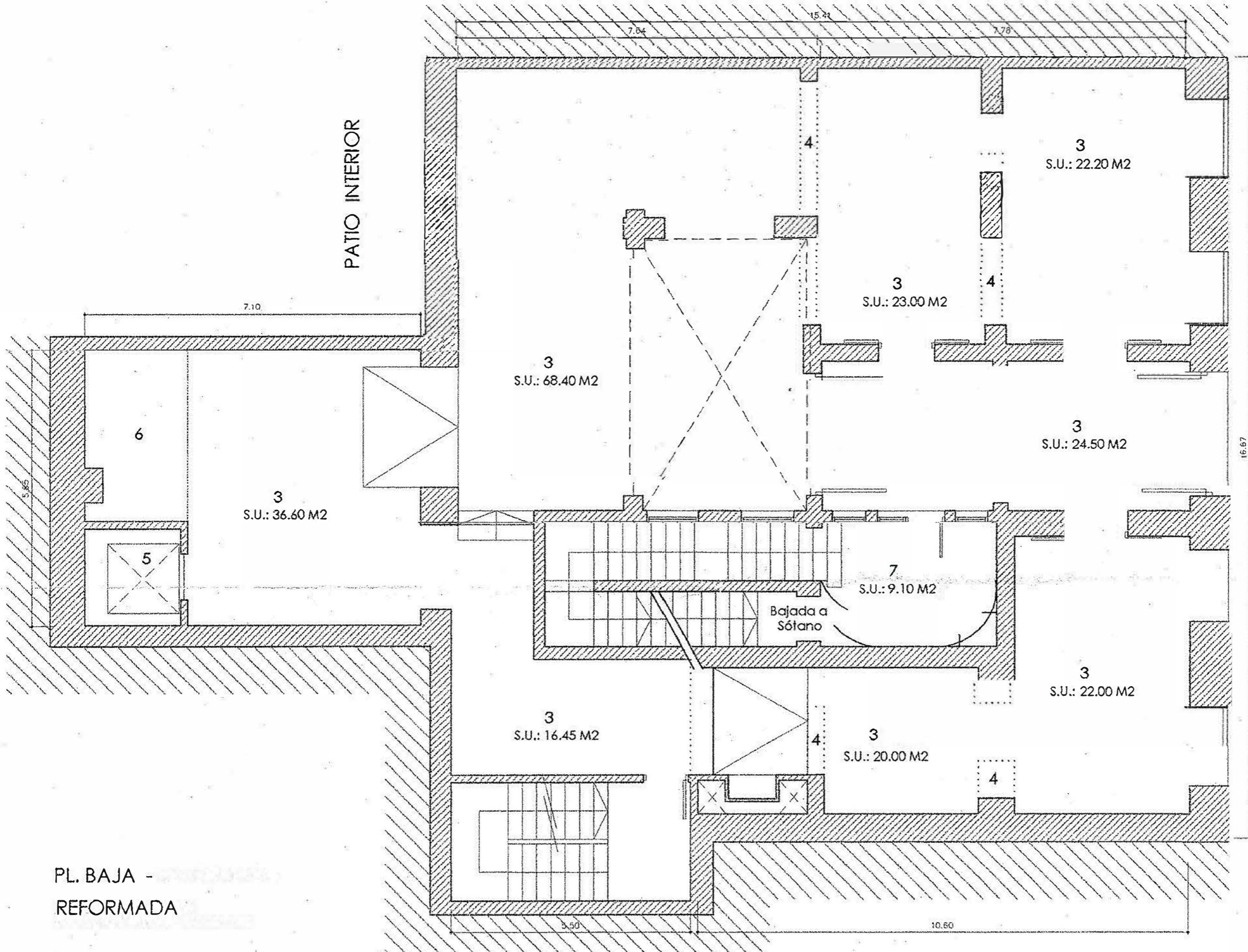


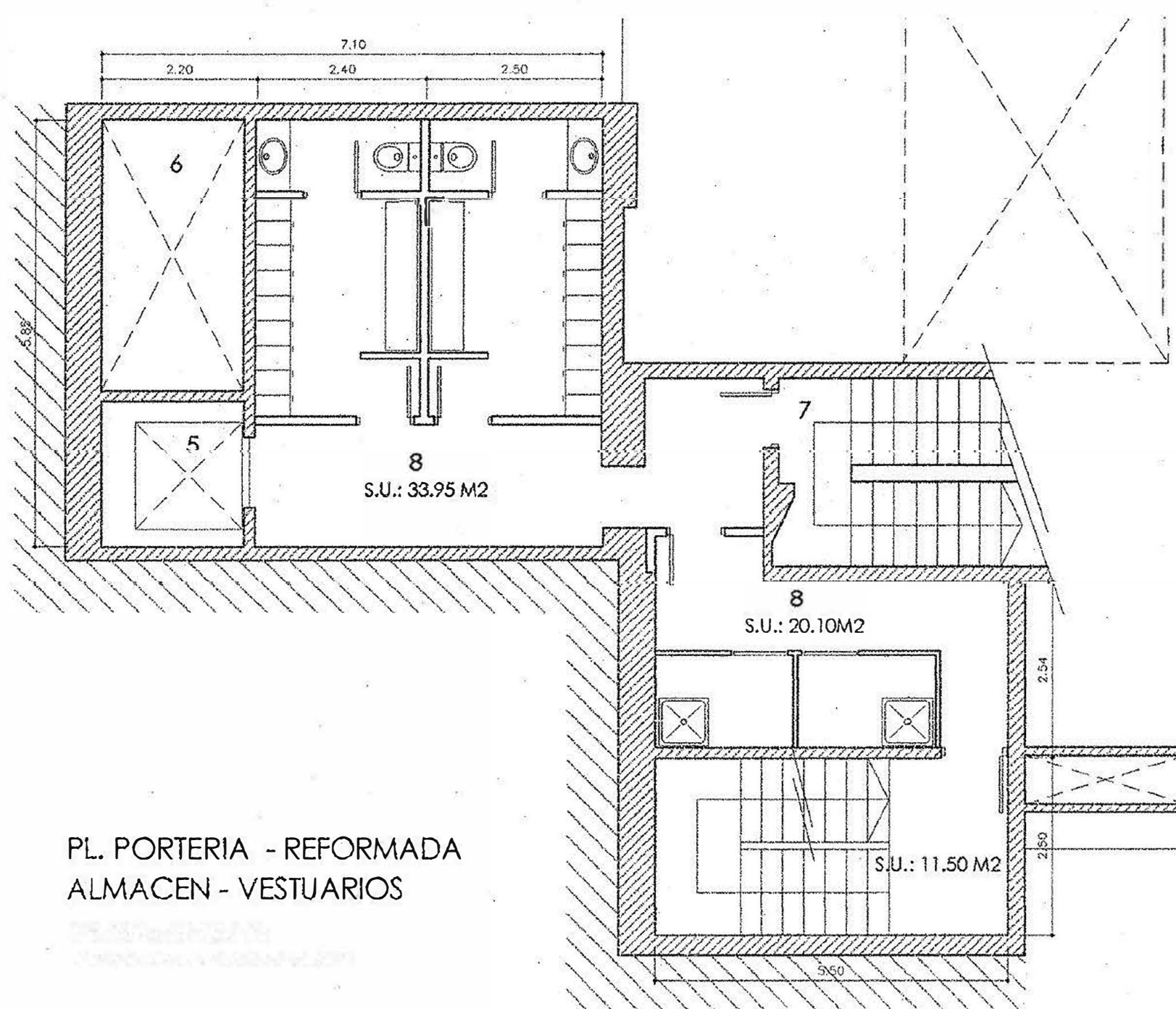
PL. SOTANO - REFORMADA



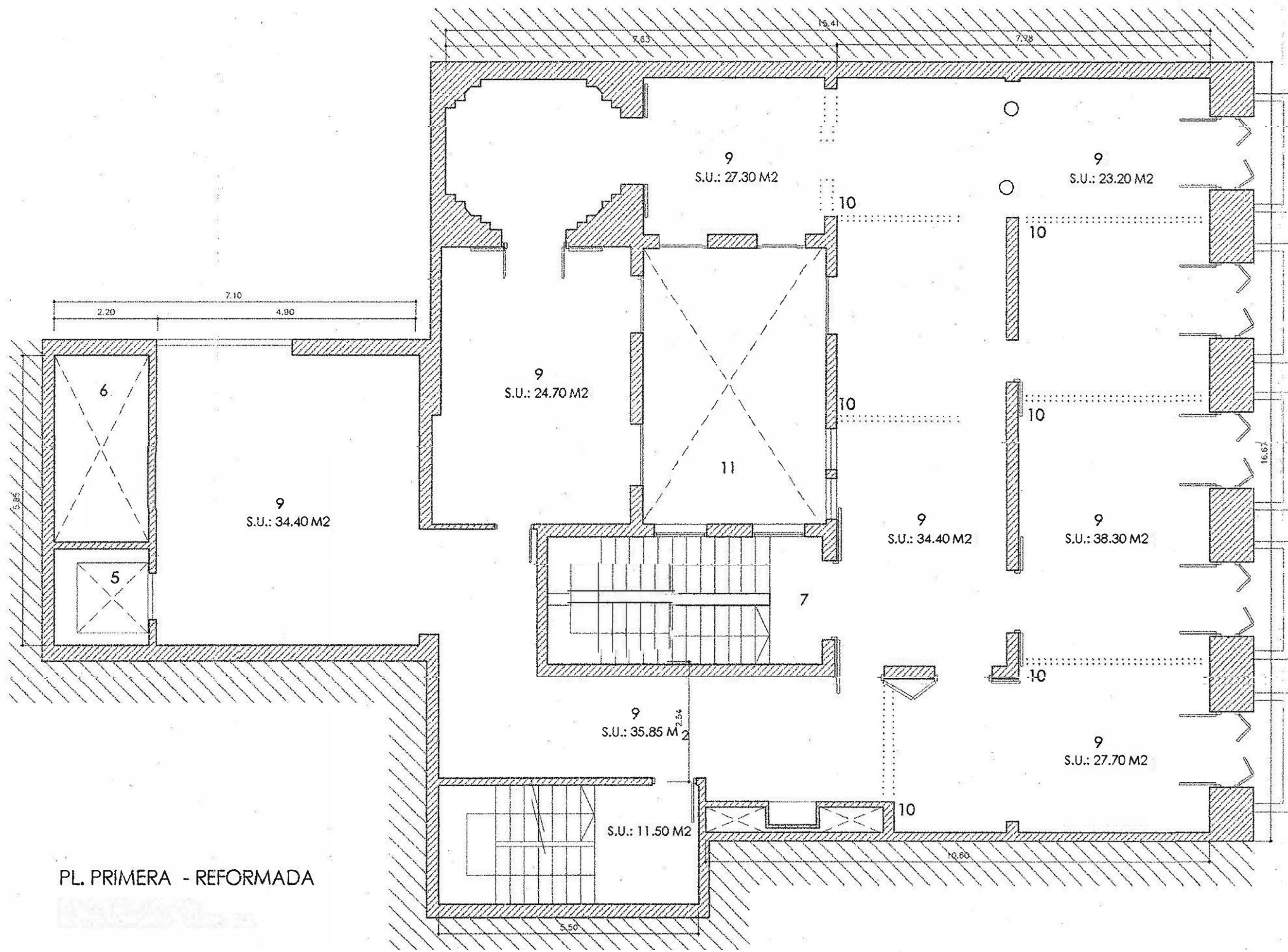
PL. BAJA -
REFORMADA



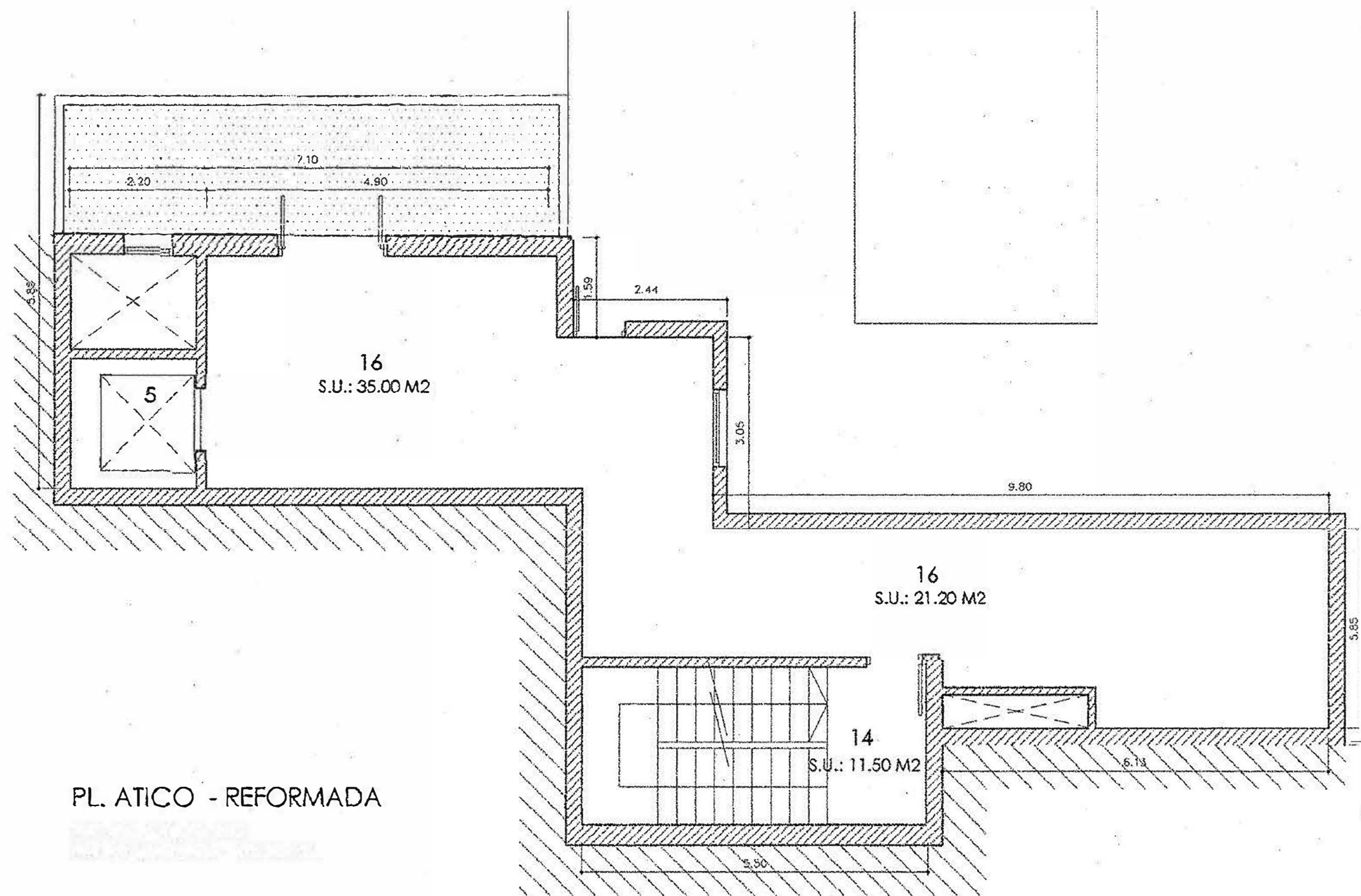
CALLE POSTIGO DE SAN MARTÍN - Nº 8



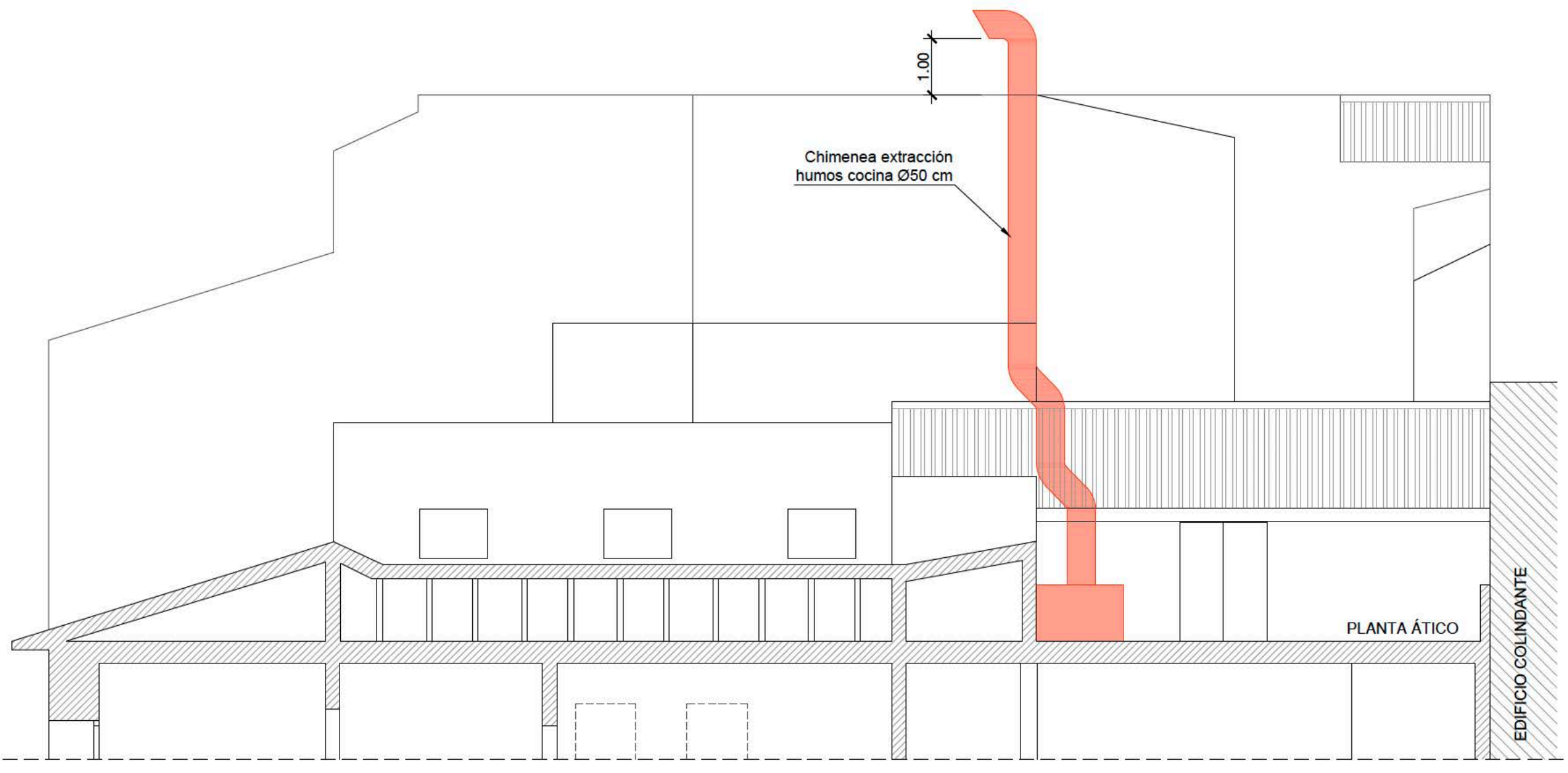
PL. PORTERIA - REFORMADA
 ALMACEN - VESTUARIOS



PL. PRIMERA - REFORMADA



PL. ATICO - REFORMADA

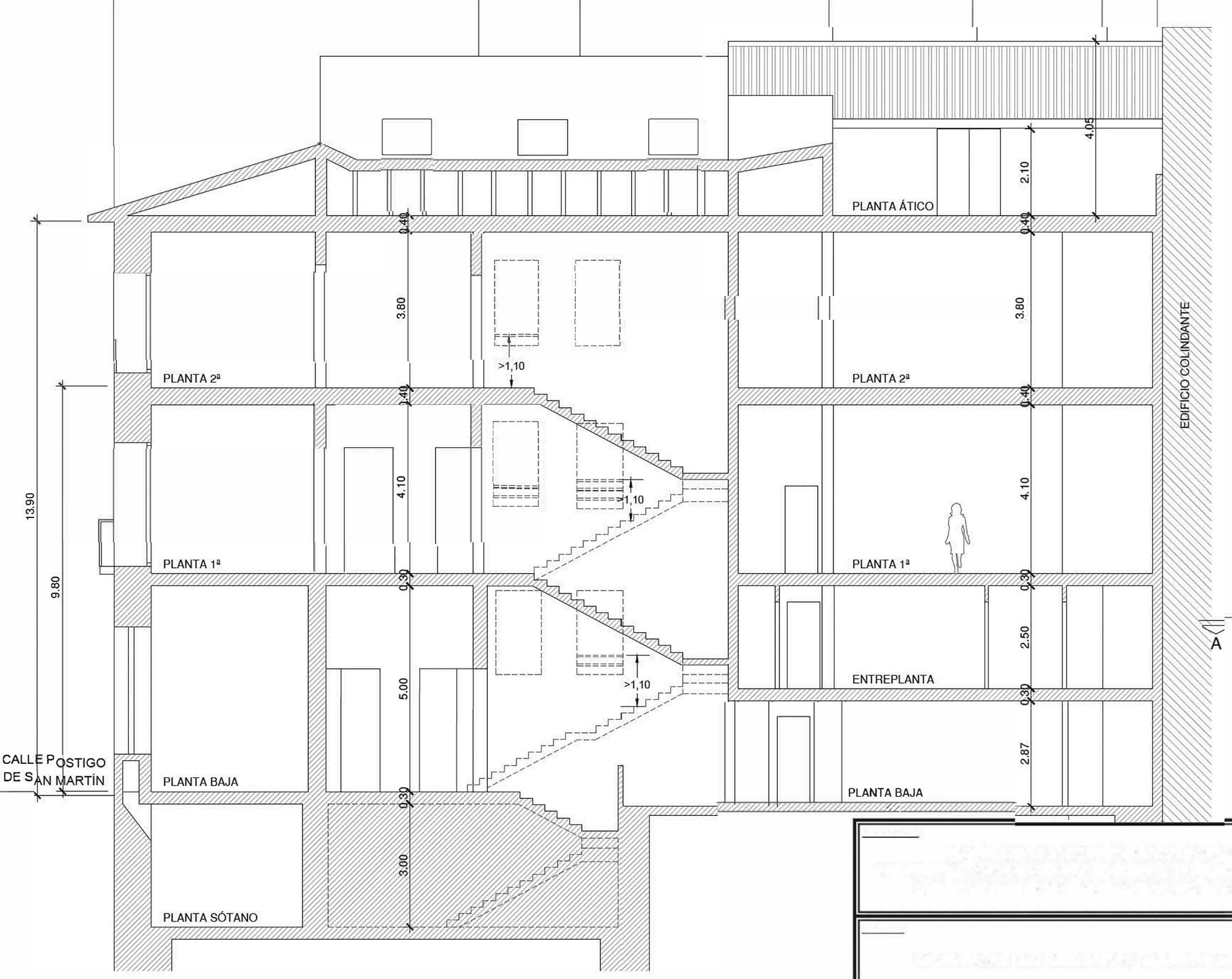


Chimenea extracción
humos cocina Ø50 cm

1.00

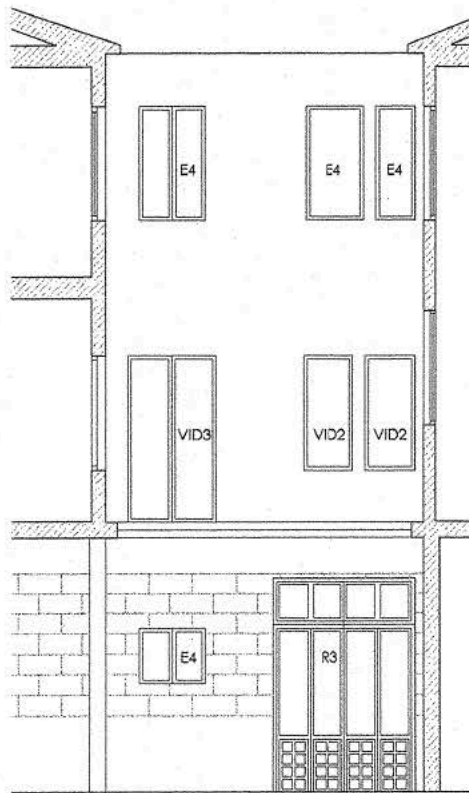
PLANTA ÁTICO

EDIFICIO COLINDANTE

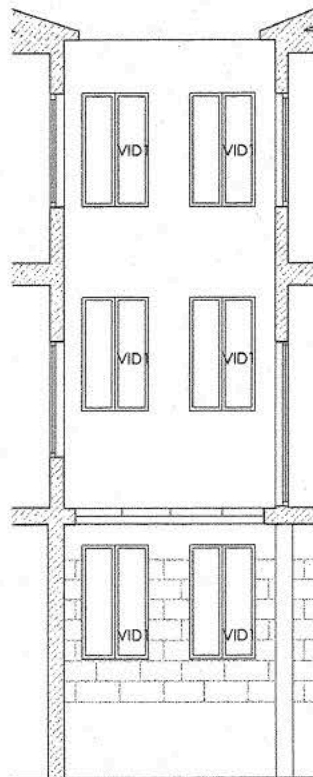




ESTADO ACTUAL - ALZADOS PATIO INTERIOR PRINCIPAL



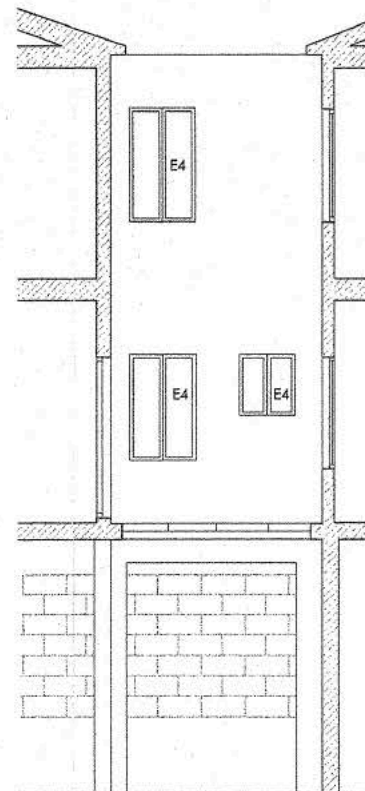
ALZADO OESTE PATIO



ALZADO NORTE PATIO



ALZADO ESTE PATIO



ALZADO SUR PATIO