

PILCHER ● LONDON

bespoke commercial property consultants

**17 carlisle street
london, w1d**

for rent / lease

509 - 3,056 sq ft

a stylishly refurbished self
contained office building in the
heart of soho



www.pilcher.london | 0207399 8600

● 17 Carlisle Street, London, W1D

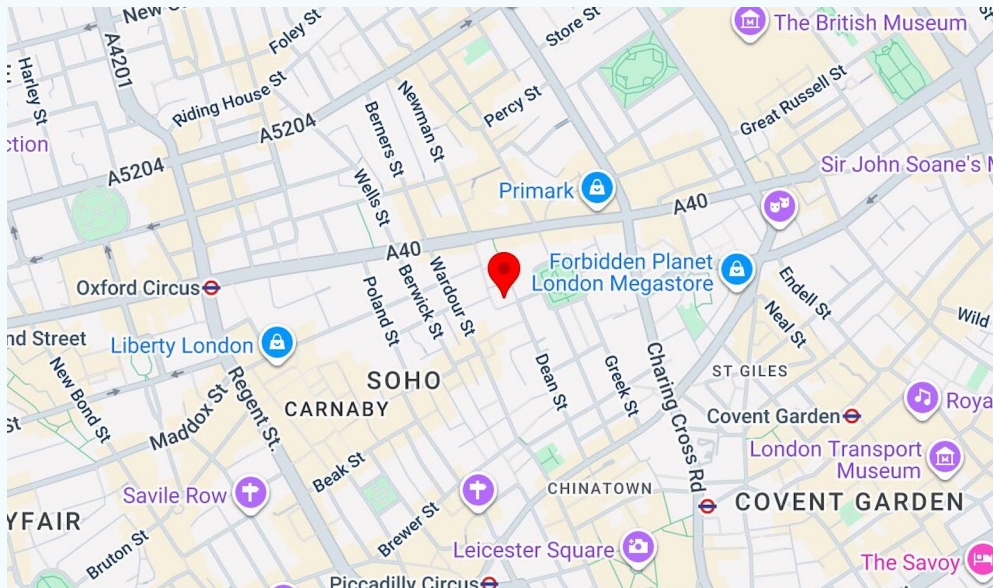


about

this stylishly refurbished building in the heart of soho is going to be offered on a fully fitted basis

location

the building is situated on Carlisle close to the junction with Dean Street being approx 100m to the Elizabeth Line entrance.



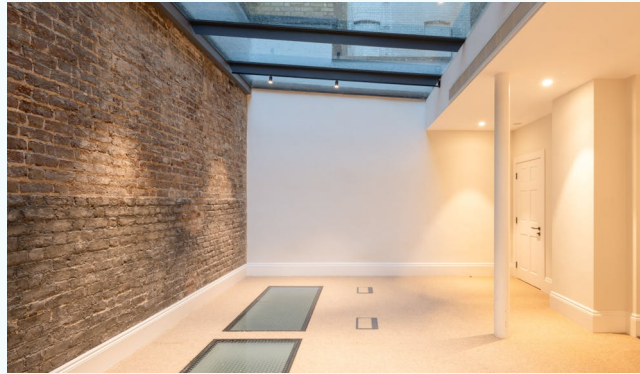
PILCHER ● LONDON

www.pilcher.london | 0207399 8600

● 17 carlisle street, london, w1d



● 17 carlisle street, london, w1d



● 17 Carlisle Street, London, W1D

Accommodation

The accommodation comprises the following areas:

name	sq ft	sq m	availability
3rd	520	48.31	available
2nd	512	47.57	available
1st	509	47.29	available
ground	771	71.63	available
lower ground	744	69.12	available
total	3,056	283.92	

● 17 Carlisle Street, London, W1D

amenities

- excellent natural light throughout
- kitchen
- air conditioning
- newly refurbished
- to be offered fully fitted
- separate meeting rooms
- alarm

financials

rent	£255,000 per annum
rates payable	£24.88 per sq ft
service charge	n/a

legal fees

each party to bear their own costs

vat

applicable

lease

new lease

possession

available immediately

● 17 Carlisle Street, London, W1D

PILCHER ● LONDON

bespoke commercial property consultants



viewings & more information

taylor rosen

020 7399 8610 | 07834 789 346

taylorrosen@pilcher.london

simon rinder

020 7399 8611 | 07734 488 286

simonrinder@pilcher.london

julian wogman

020 7399 8605 | 07904 337 664

julianwogman@pilcher.london