



LADYFIELD

HOUSE



## FULLY REFURBISHED WORKSPACE STEPS FROM WILMSLOW STATION

Positioned immediately next to Wilmslow train station, **LADYFIELD HOUSE** provides exceptional connectivity for staff and clients alike. Frequent rail services link directly to Manchester, London, and Manchester Airport, while the nearby A34 places the wider South Manchester and Cheshire network within easy reach. For organisations that value accessibility and convenience, this location delivers both with ease.



It's an ideal environment for growing firms seeking a professional base that can evolve with their needs. **LADYFIELD HOUSE** blends strong transport links, quality workspace, and a strategic Wilmslow address-making it a smart choice for businesses looking to elevate their presence in the region.





## AVAILABILITY

The available 1,485 SQ.FT. ground-floor suite has recently undergone a refurbishment, and is ready to move into.

The space has been designed to support modern working practices, combining practicality with a clean, contemporary feel.

A welcoming kitchen and breakout area creates a natural hub for informal meetings and team downtime, while the main open-plan office offers flexibility for a variety of layouts.

In addition, a separate private office and a dedicated meeting room provide the right balance between collaborative and focused work.

## FEATURES



CENTRALLY LOCATED



ON-SITE PARKING



BUILDING MANAGER



FIBRE CONNECTIVITY



AIR-CONDITIONING

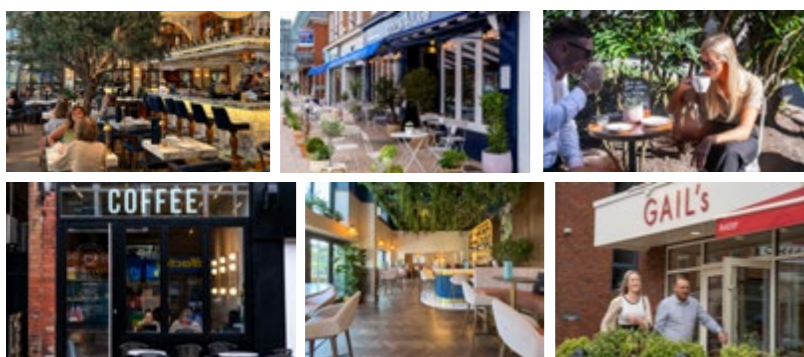


TRANSPORT LINKS



## WILMSLOW

The location boasts more than just practical commuting, with a leisure centre within walking distance and an abundance of shops and restaurants, ensuring a well-rounded and easily accessible environment.



## CONNECTIVITY

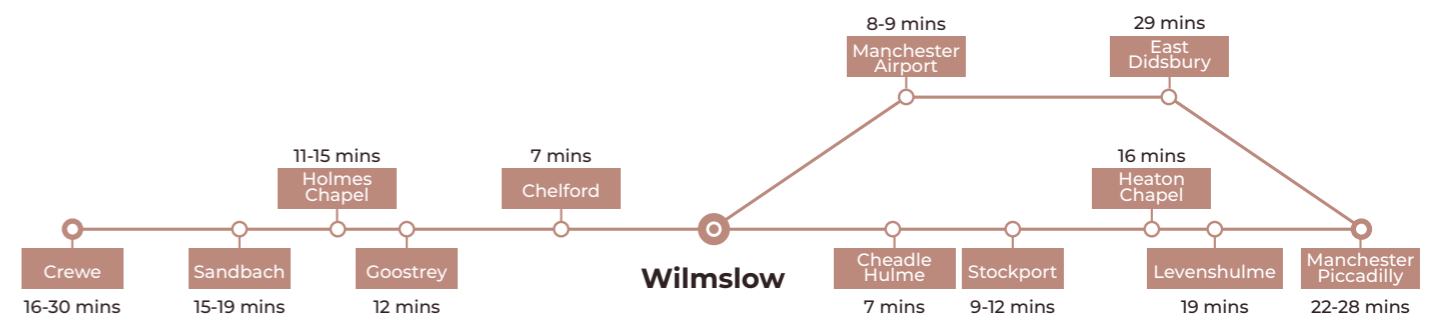
**WALKING:**  
 Wilmslow Train Station (Trains to Manchester and London Euston) **1 min**  
 Post Office **5 mins**  
 Waitrose **4 mins**  
 Broadway Car Park **7 mins**

**MOTORWAY DRIVE TIMES:**  
 A34 **2 min**  
 A555 **5 min**  
 M60 **12 mins**  
 M56 **13 mins**  
 M6 **±28 mins**

**DRIVE TIMES:**  
 Manchester Airport **10 mins**  
 Manchester City Centre **25 mins**  
 Liverpool **1 hour**

## TRAIN TRAVEL TIMES

**Crewe - Manchester train line.**  
 Travel time from Wilmslow



**London to Manchester - West Coast main line.**  
 Travel time from Wilmslow





# LADYFIELD

HOUSE

**STATION ROAD, WILMSLOW, SK9 1BB**

***Orbit***  
**Developments**

**01625 588200**  
[www.orbit-developments.co.uk](http://www.orbit-developments.co.uk)

Images are for illustrative purposes only and may not represent the exact office space available.

Developer reserves the right to change the scheme in the future. However, the Vendors / Lessors and Agents of intended as a general outline only, for the guidance of prospective purchasers or tenants, and do not constitute the whole or any part of an offer or contract. (2) They cannot guarantee the accuracy of any description, dimension or other details contained in these Particulars and prospective purchasers or tenants should not rely on them as statements of fact or representation, but must satisfy themselves as to the accuracy of such details. (3) No employee of the Agents has any authority to make or give any representation or warranty, or enter into any contract whatsoever in relation to the property (1225)