

Commercial Brochure



Contents

03 Introducing Northern Group

04 Timeline 2008 - 2018

05 Timeline 2018 - Present

06 Our Team

07 Our Portfolio

08 Our Services

09 Why choose NG

10 Case Study - eBay

11 - 16 Available Spaces

17 What our Customers say



Introducing Northern Group

We are a passionate team of property professionals with over 20 years of experience.

Based in Manchester, we are an owner, developer and manager of residential, commercial and mixed-use property.

Northern Group also offers a full-service sales proposition, from first enquiry to completion. Along with a wide range of properties for sale and exciting investment opportunities, we also support you every step of the way when it comes to selling your own property.





2008



Founded
by Nathan Ezair

Initial assets: owned
and managed

- Flint Glass Works
- Bradley Street
- Lever Street

Flint Glass Wharf
Developed and owned by Northern Group

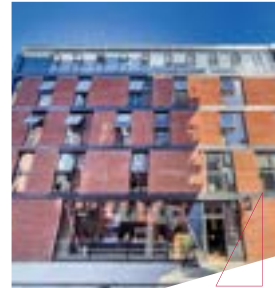
- 136 apartments
- 3 commercial retail units
- One of the first BTR developments in UK



2010

Jactin House
Developed and owned by Northern Group

- 40+ office suites
- Social bar / kitchen
- Private roof terrace



2016

Acquisitions into portfolio:

- Clarence Arcade
- Apts in One Cutting Room Square
- Flemming Court
- Silkwood Park
- Land Acquisitions



2018

Acquisitions into portfolio:

- Commercial units in Popworks
- Ardwick Green North
- Old School House
- Selco, Regent Road
- Land Acquisitions



2019

2009



Greenbank Road, Gately
Developed and owned by Northern Group

- 5 apartments
- South Manchester location
- Close to airport

2012



Ice Plant
Developed and owned by Northern Group

- 82 premium apartments
- 5 commercial retail units
- Cutting Room Square location

2017

Acquisitions into portfolio:

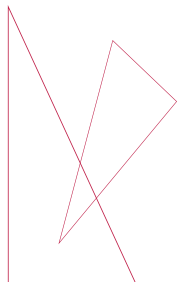
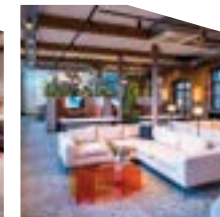
- The Hub, Piccadilly Place
- Wellington House
- Commercial suites in Royal Mills
- Land Acquisitions



COLONY

Founded by Nathan Ezair & Aaron Ezair

- Workspaces from Northern Group
- Flexible workspace / Co-working
- Expanded to 7 sites across Manchester
- Daily Express #1 co-working space in the UK



Acquisitions into portfolio:

- Crown Industrial Estate
- Octagon House
- Charlton Portfolio
- Retail Parade, Wilmslow Road



2021

One Silk Street

Developed & owned by Northern Group

- 75 premium apartments
- 3 floor of COLONY
- Private roof terrace



2022

The Quarters

Build To Rent Management

- Brought to market by Northern Group
- 100 Residential units & 5 Commercial units
- Fully Let within 6-months



2023

Acquisitions into portfolio:

- Sainsburys unit at Islington Wharf
- Gails unit in Altrincham Centre



Ancoats Green

To be developed by Northern Group

A new development including a mix of residential, commercial, and recreational spaces.



Holt Town

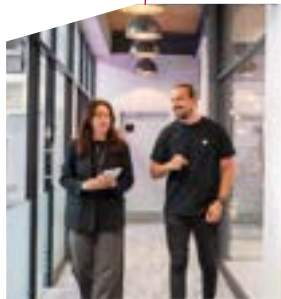
To be developed by Northern Group

A Manchester City Council regeneration project with Northern Group as a development partner.



Future

2020



Landlord Services

Launched

Northern Group Property Management Services for investors and Private Landlords.



One Cutting Room Square

Block Managers

- 28 premium apartments & 3 townhouses
- Prime Ancoats Location
- Reduced service charge by 30%



Acquisitions into portfolio:

- Fabrica
- Pin Mill Brow
- Apts in One Vesta Street



Avro

Block Managers

- 25 premium apartments
- 3 premium townhouses
- Ancoats location



Acquisitions into portfolio

- Spring Gardens
- King Street
- Siemens



Acquisition into portfolio

- Wienerberger House, Cheadle
- Sovereign House, Leeds
- Full management of One Vesta Street



Introduced Sales

- Exclusive off-plan & new build opportunities
- First-time buyer assistance



Our Team

We are industry experts who are not afraid to think differently.

Friendly and reliable, with an astute approach to the property market.

Our team are passionate about property and will go above and beyond to provide impeccable service standards.

Northern Group has a growing team, approaching 50 employees working alongside our actively involved owner, Nathan Ezair.

[View our full team](#)



Nathan Ezair
Founder / Director



Paul Dobbs
Chief Operating Officer
AssocRICS, FARLA



Debbie Taaffe
Finance Director
MAAT



Businesses that choose Northern Group.

We manage a diverse commercial portfolio across Manchester, suitable for a range of different businesses.

Our portfolio includes serviced offices, open-plan workspaces, studios, retail units, and industrial spaces in key locations such as Manchester city centre, Northern Quarter, Ancoats, New Islington, Miles Platting, Ardwick and Salford. We have also expanded further into Leeds city centre.

Businesses within some of our current commercial spaces →

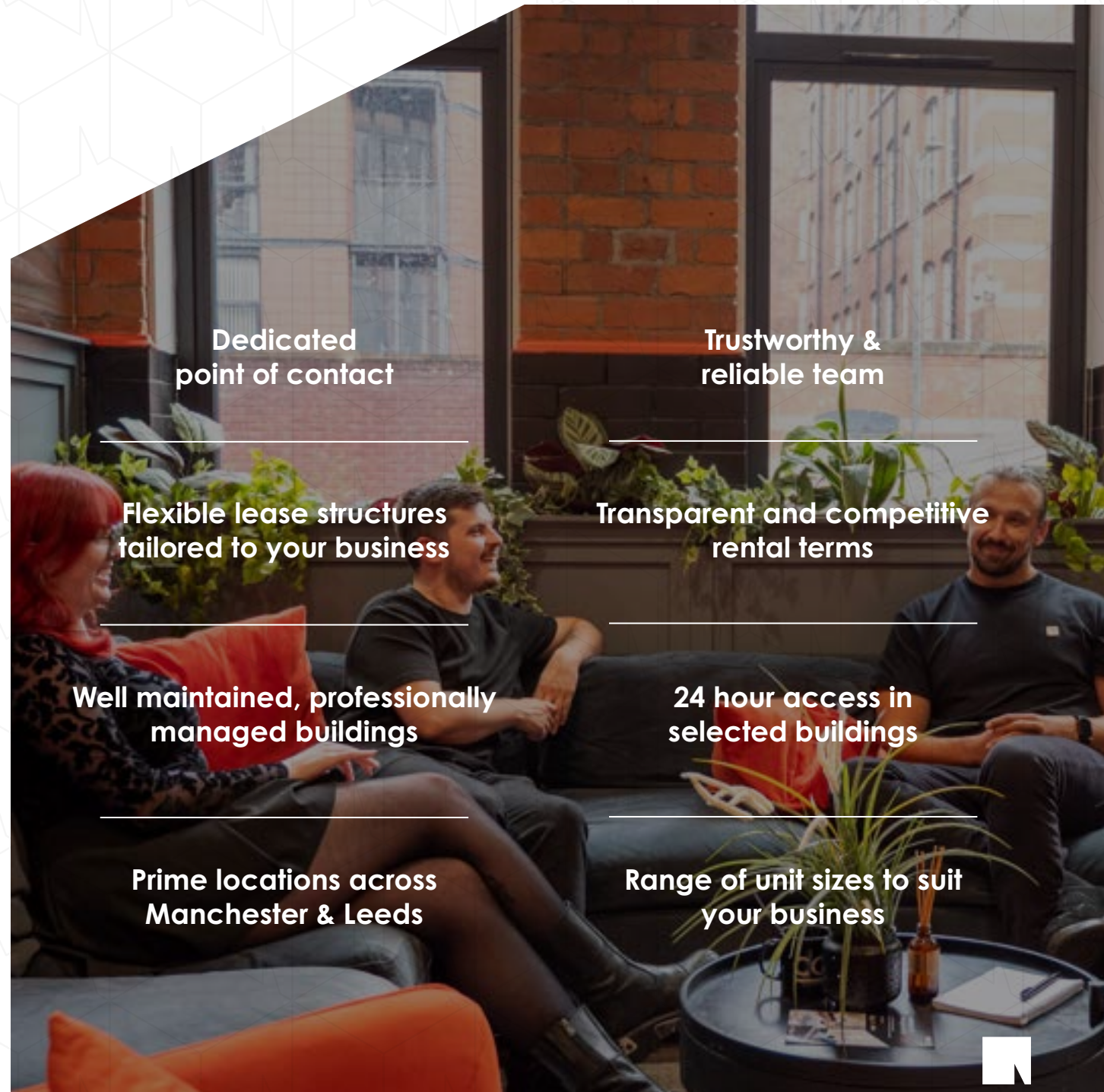


Services

At Northern Group, customer satisfaction is at the heart of every decision we make.

We understand that your business premises is an important investment, therefore we put your needs first and operate on a simple and transparent pricing structure.

We deliver a wide range of services to ensure your property is managed efficiently and effectively. We care about your investment as though it were our own.



**Dedicated
point of contact**

**Trustworthy &
reliable team**

**Flexible lease structures
tailored to your business**

**Transparent and competitive
rental terms**

**Well maintained, professionally
managed buildings**

**24 hour access in
selected buildings**

**Prime locations across
Manchester & Leeds**

**Range of unit sizes to suit
your business**



Why Choose Northern Group

Choosing Northern Group means partnering with a team that understands Manchester's commercial landscape inside out.

With a diverse portfolio across the city's most sought after districts, we offer well positioned, high quality spaces suited to a range of businesses. Our approach is professional, transparent and responsive, ensuring a smooth leasing process from initial enquiry to move in.

Whether you are an established company or a growing brand, we provide the local insight and ongoing support needed to secure the right space and thrive in a competitive market.



Managed Property for Over 20 Years



Manchester City Council Licensed Agent



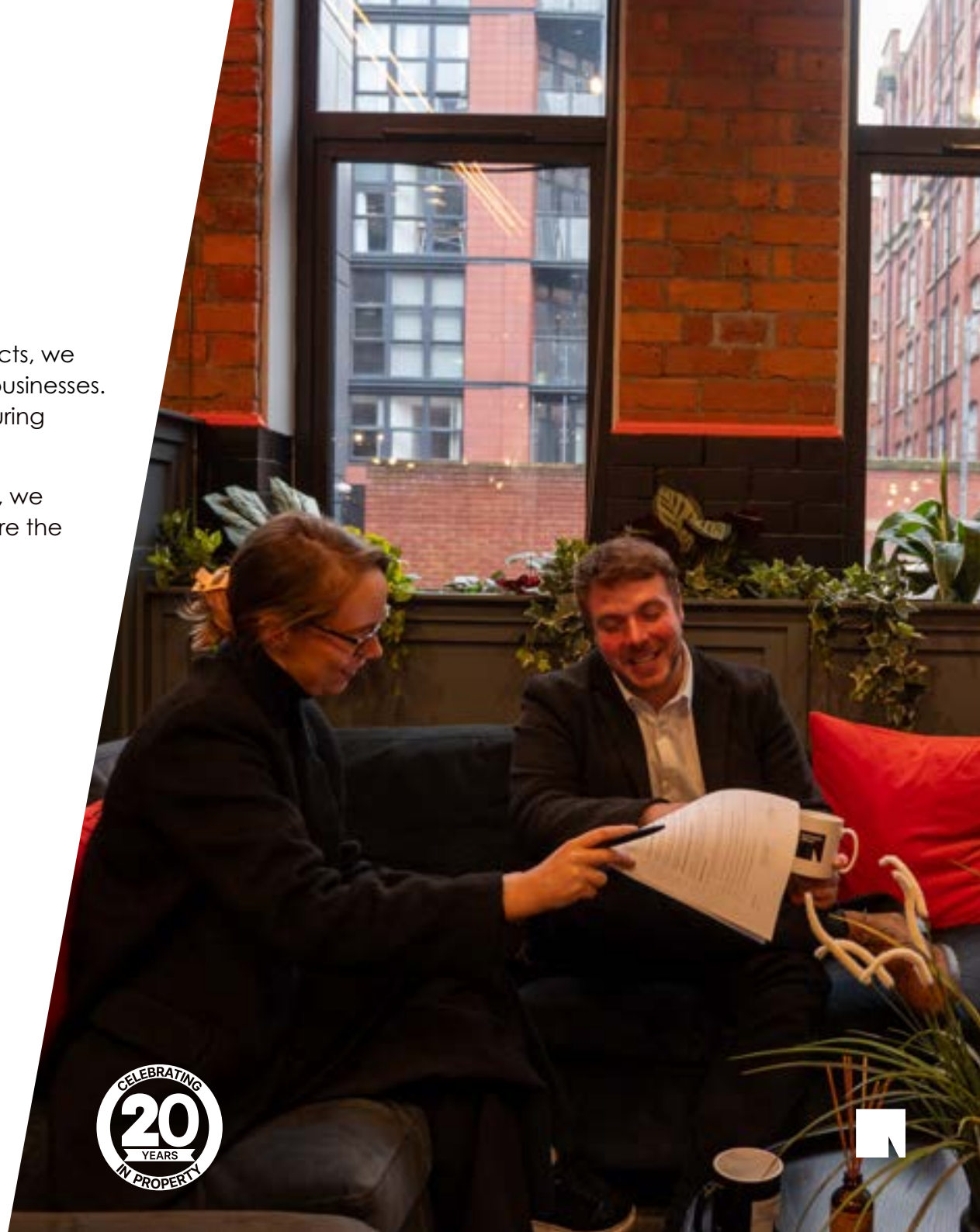
One Dedicated Point of Contact



Expertise in Manchester & Surrounding Areas



Track Record of Expert Commercial Management



eBay Web3 Team at The Astley, Ancoats

Northern Group's Colony workspace was selected by eBay as its Manchester workspace operator for its Web3 division, further reinforcing Manchester's reputation as a global hub for innovation and technology.

eBay secured 4,000 sq ft of serviced office space within The Astley. The building offers vibrant, design led workspace across two floors, including private offices, flexible work areas, meeting rooms and collaborative breakout spaces.

The serviced model provides eBay with the flexibility to scale efficiently while benefiting from premium facilities, managed services and a thriving professional community. This approach supports talent attraction, operational agility and continued regional growth.

This partnership demonstrates Northern Group and Colony's ability to deliver high quality, flexible commercial environments that meet the needs of major international brands, innovative teams and ambitious businesses seeking a strong presence in Manchester.



Available Commercial Spaces

[View all](#)

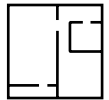
Helping your business thrive,
one space at a time.

Ardwick Green

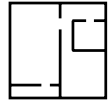
Three versatile spaces ideal for office, studio or creative uses. Combining character, practicality and on site parking, these spaces suit a range of growing businesses.

Situated in a vibrant, well connected neighbourhood just minutes from Ardwick station and Manchester Piccadilly, Ardwick Green provides an excellent base for companies looking to establish themselves in a dynamic Manchester location.

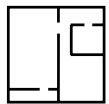
Spaces available



717 sq ft
£1,411pcm



4,421 sq ft
£4,911PCM



1,444 sq ft
£2,841pcm



Flexible for
multitude
of businesses



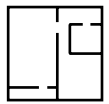
Car parking included



King Street

Grade II listed building in the heart of central Manchester with first floor office space, blending historic character with modern functionality and furnishing. Positioned on one of Manchester's most prestigious business addresses, surrounded by high end retail, dining and amenities, this is a standout opportunity in a prime commercial location.

Space available



8939 sq ft



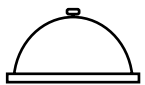
24 hour access



Bike storage



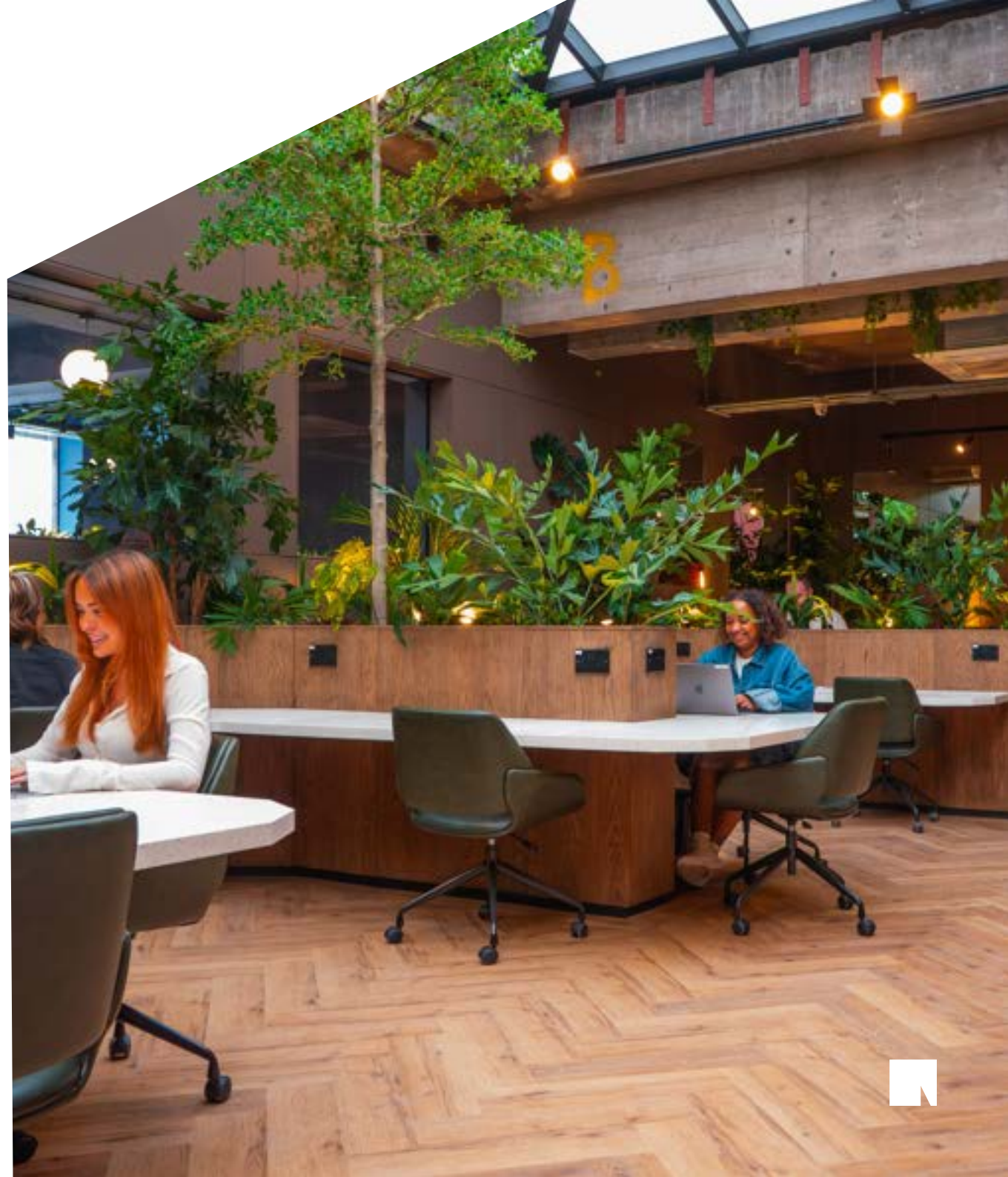
Central location



Reception



Suitable for a HQ, large office space/showroom

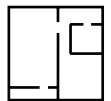


Stevenson Square

Open plan office space in the heart of the Northern Quarter. Located directly on Stevenson Square, this second floor suite benefits from excellent natural light, generous ceiling heights and 24 hour access, presented in excellent condition.

Surrounded by independent cafés, restaurants and creative businesses, this is a rare opportunity to secure high quality workspace in one of Manchester's most sought after commercial locations.

Spaces available



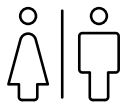
1,500 - 2,500 sq ft
Rent 22.50 per sq ft



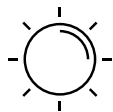
Perfect NQ
location



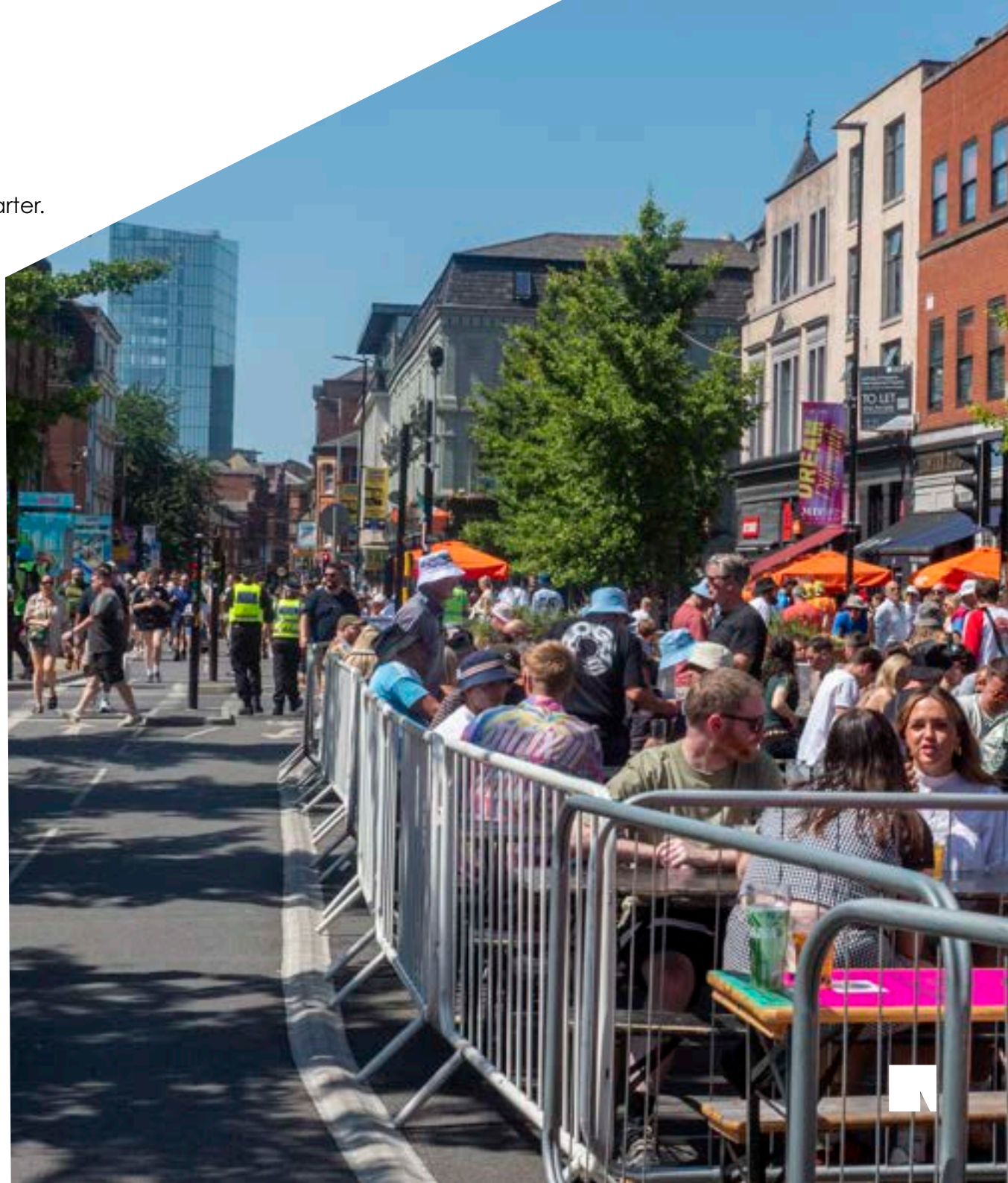
24 hour access



Private kitchen
/bathrooms



Open-plan layout with high
ceilings & great natural light

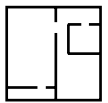


Fabrica

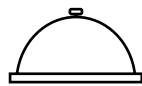
Newly refurbished Cat A office space in the heart of New Islington. Positioned on Great Ancoats Street, this modern workspace offers 24 hour access, air conditioning, manned reception and collaborative areas, creating a professional and flexible environment for growing businesses.

Just a short walk from Ancoats and New Islington Marina, with a wide range of cafés, retailers and amenities nearby, Fabrica places your business in one of Manchester's most vibrant districts with excellent accessibility.

Space available



5,261 sq ft



Reception



Premium
Co-working
spaces*



Parking
availability



Perfect New
Islington location

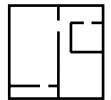


Sovereign House

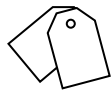
Sovereign House is more than just an office. It is a place where businesses can grow, teams can connect and ideas can flourish. Combining flexible workspace with a vibrant surrounding neighbourhood, it is perfectly positioned to support long term success.

Situated in Leeds city centre, it is surrounded by a vibrant mix of food, drink and leisure destinations, making it easy to enjoy lunch breaks, unwind after work and bring teams together.

3 Spaces available



Between 2,900
- 6,200 sq ft



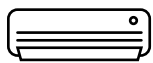
£7,900 -
£12,883 PCM



Dedicated
cycle storage



Newly installed
shower and
changing facilities



Full HVAC air
conditioning



Intelligent,
energy-efficient
LED lighting



What Our Customers Say

Google Rating
★ 4.8/5

“

I can't thank Adam and Caitlin enough after recently helping me and my partner secure a commercial letting for a business we are starting.

The service from start to finish was excellent! I would highly recommend using The Northern Group, they were professional, friendly and very efficient through out the whole process. We will definitely be using them again.

”

“

The maintenance team were fantastic - super friendly and very efficient! They quickly identified and fixed the problem without any fuss, and nothing was too much trouble for them.

They were polite, professional, and tidied up after themselves. It made the whole experience really easy, and at ease.

”

“

The lettings experience has been seamless, with a very friendly lettings team. The team at Northern Group were readily available on call and flexible when arranging timing for viewings of commercial spaces, for our business. Responses on email were also very prompt.

Mainly I corresponded with Chloe, who was not only just friendly but very competent in her tasks. I would highly recommend

”

“

Antony is patient and helpful, no request or question is too big! Antony is not one to shy away from coming on site to investigate or support which supports with the great service he provides.

Thanks Antony!

”

“

Wayne was excellent, very professional and friendly guy. Even though the work involved drilling into a wall, we were not disturbed.

He completed the work quickly and cleaned the space exactly how it was found. Highly recommend Northern Group!

”

“

Recently dealt with Phil on securing a lease on a commercial space in Ardwick.

He was really professional and kept me up to date throughout the process. Thanks a lot Phil!

”



Contact us

If you are looking for assistance with commercial property, please do get in touch with our friendly lettings team.

☎ 0161 974 3232

✉ enquiries@northerngroup.co.uk

🌐 northerngroup.co.uk

www.northerngroup.co.uk

Google Rating
★ 4.8/5



Jactin House, 24 Hood Street
Ancoats Urban Village
Manchester M4 6WX

Northern Group. We do more.

