

# Third Floor, Parkview House

VICTORIA ROAD SOUTH, CHELMSFORD, ESSEX, CM1 1NG

To Let - Office



savills

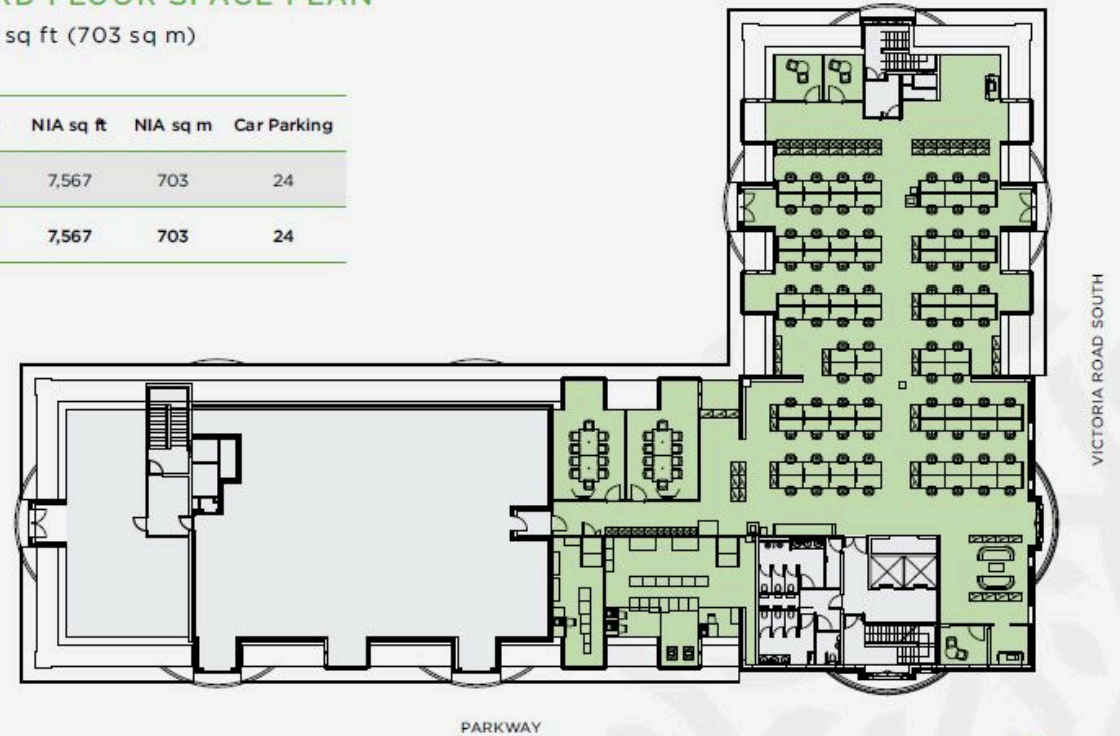
## KEY HIGHLIGHTS

- 7,567 ft<sup>2</sup>
- Grade A Office Space
- Fitted out to a high standard
- 2 x 10 person passenger lift
- Cycle Storage
- Shower Facilities
- New VRF Air Conditioning
- Integral LED Lighting
- Data cabled
- Metal tiled suspended ceiling
- Raised Floor
- Occupational density 1:7 m<sup>2</sup>
- 24 Car Parking Spaces

## THIRD FLOOR SPACE PLAN

7,567 sq ft (703 sq m)

Floor	NIA sq ft	NIA sq m	Car Parking
Third	7,567	703	24
<b>Total</b>	<b>7,567</b>	<b>703</b>	<b>24</b>



## ACCOMMODATION

The 3rd floor is available with a high quality fit out in situ and fully furnished, ready for immediate occupation. A new all-electric VRF air-conditioning system was installed in 2026.

## LOCATION

Parkview House is prominently situated on the A1060 roundabout connecting Parkway with Victoria Road South.

The property is located in the town centre within a 5 minute walk of Chelmsford Railway Station. The town centre bus station is directly opposite Parkview House.



## RENT

A guide rent of £265,000 pax is sought which equates to £35 psf pax

## RATES PAYABLE

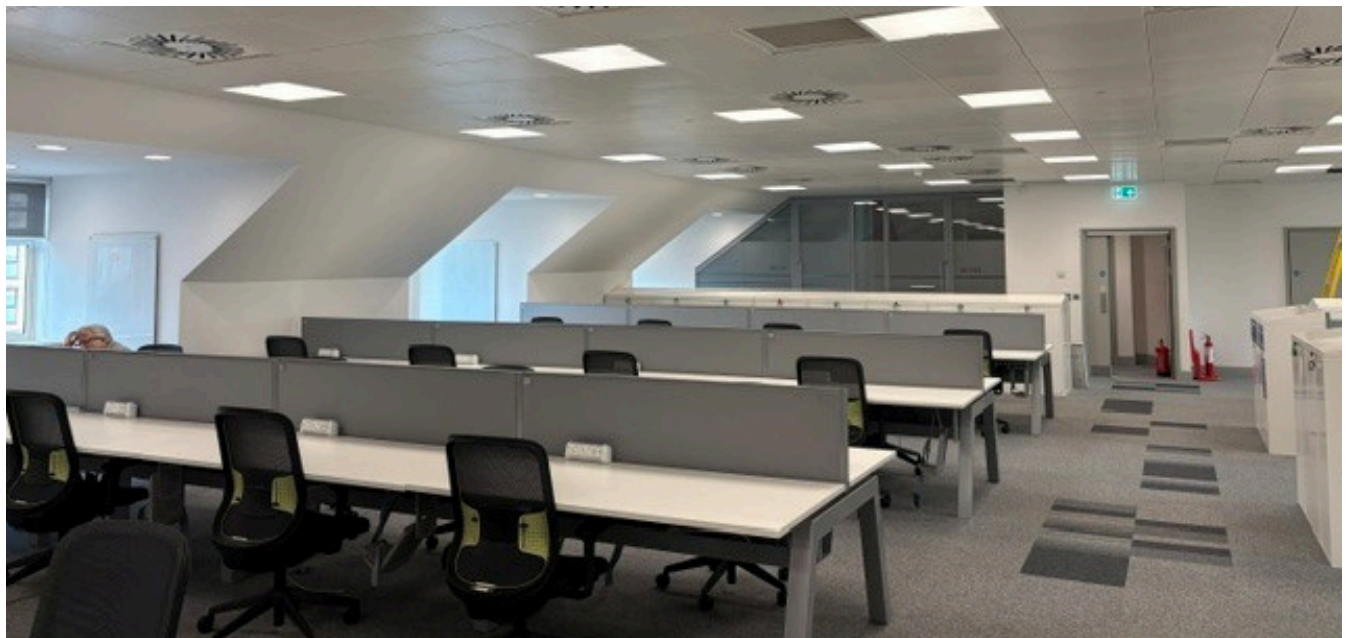
Tenants should make their own investigations with the VOA. Please note the valuation has been deleted from the Ratings List following the HVAC works.

## SERVICE CHARGE

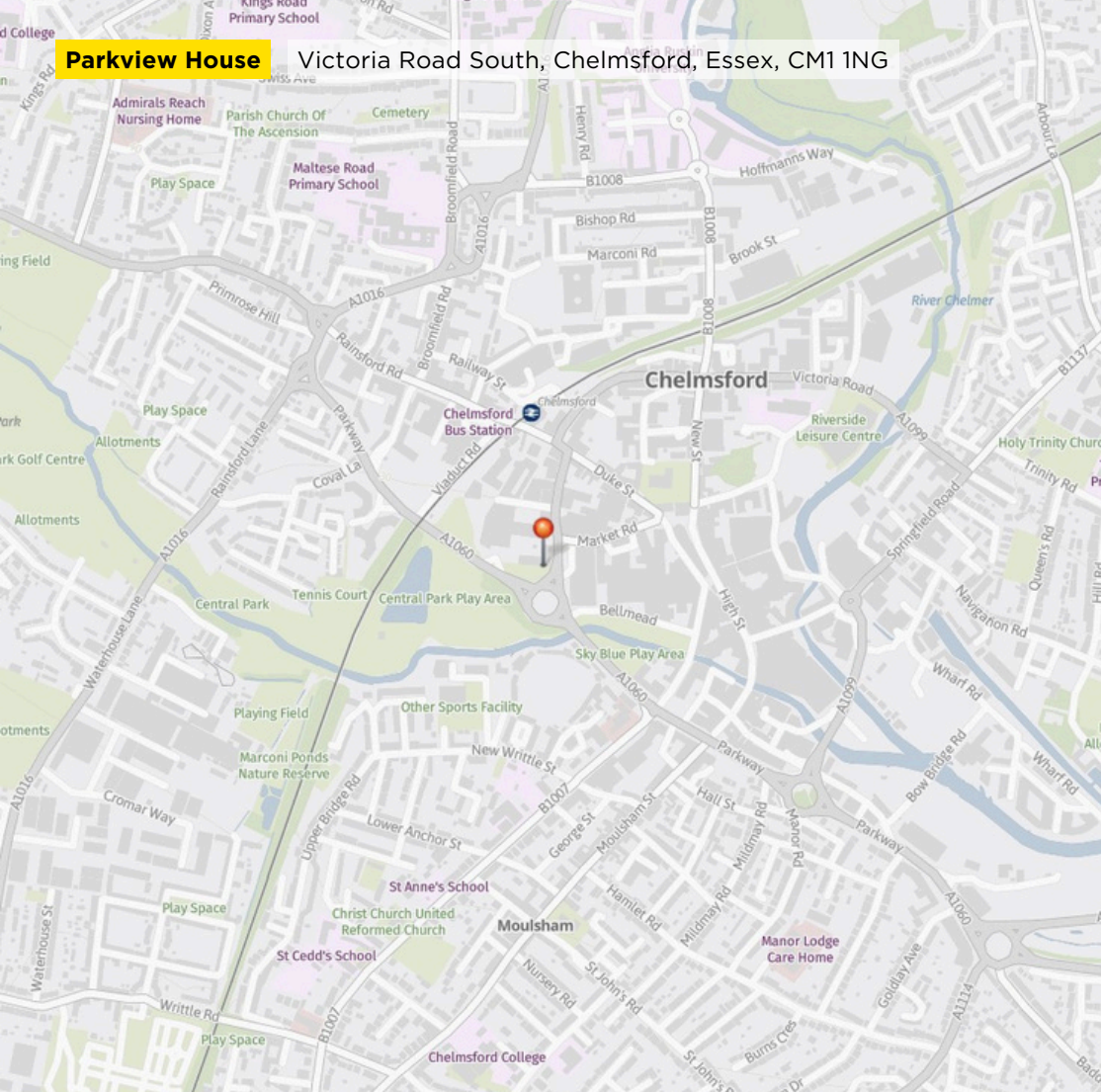
Service charge currently running at approximately £9.00 per sqft per annum.

## VAT

Payable on all rents.



**Parkview House** Victoria Road South, Chelmsford, Essex, CM1 1NG



## EXISTING OCCUPIERS

Floor	Tenant
Ground	Savills
First	Tees Law
Second	Intact Insurance
Third	Vacant

### IMPORTANT NOTICE

Savills, their clients and any joint agents give notice that:

1. They are not authorised to make or give any representations or warranties in relation to the property either here or elsewhere, either on their own behalf or on behalf of their client or otherwise. They assume no responsibility for any statement that may be made in these particulars. These particulars do not form part of any offer or contract and must not be relied upon as statements or representations of fact.
2. Any areas, measurements or distances are approximate. The text, images and plans are for guidance only and are not necessarily comprehensive. It should not be assumed that the property has all necessary planning, building regulation or other consents and Savills have not tested any services, equipment or facilities. Purchasers must satisfy themselves by inspection or otherwise.

Maps are reproduced from the Ordnance Survey Map with the permission of the Controller of H.M. Stationery Office. © Crown copyright licence number 100022432 Savills (UK) Ltd, and published for the purposes of identification only and although believed to be correct accuracy is not guaranteed.

Designed and produced by Savills Marketing: 020 7499 8644 | 26.02.26

## CONTACT

For further information please contact:

**Mike Storr**

mstorrs@savills.com  
01245 293228