

AVAILABLE
FOR OCCUPATION
APRIL 2025

CREWE 335

WESTON ROAD, CW1 6NA

NEW DISTRIBUTION UNIT

UNDER CONSTRUCTION

335,000 SQ FT
(31,124 SQ M)



SUSTAINABLE
DESIGN



UNDER
CONSTRUCTION
NOW



1 MVA
POWER SUPPLY

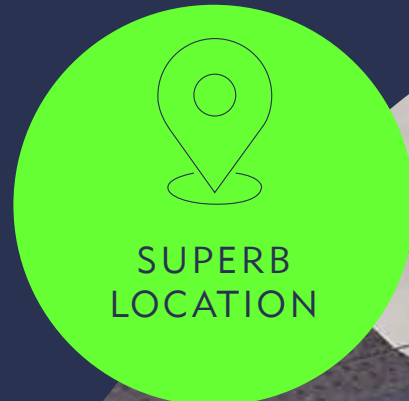
MARKET LEADING SPACE

Crewe 335 is a brand new, market leading distribution unit situated in the heart of Crewe's established commercial area. Strategically located within 7 minutes of the M6 Motorway (Junction 16), connectivity to both the North West and Midlands has never been better.

Located on the site of the renowned "Old Tea Factory", Crewe Town Centre is within walking distance whilst key nearby commercial centres including Manchester, Liverpool, Stoke on Trent, Stafford, and Birmingham can be accessed via the M6.

The unit comprises 335,000 sq ft and has been designed to an enhanced specification that includes various sustainable initiatives that are of critical importance to Trebor and our stakeholders. The unit will be finished to Trebor's highest standards and occupiers can expect a best-in-class facility for their future operations. The unit will achieve BREEAM "Excellent" accreditation.

Detailed planning consent was secured in 2023 and construction started on site in August 2024, targeting Practical Completion in April 2025.





IT'S ALL IN THE DETAILS

ENHANCED SPECIFICATION

-  FIBRE CONNECTIVITY
-  84 CYCLE SPACES
-  BREEAM "EXCELLENT"
-  EPC "A" RATING
-  EV CHARGING POINTS
-  ROOF DESIGNED FOR PV PANELS
-  SUSTAINABLE MATERIALS
-  ENERGY EFFICIENT HEATING, COOLING, AND LIGHTING

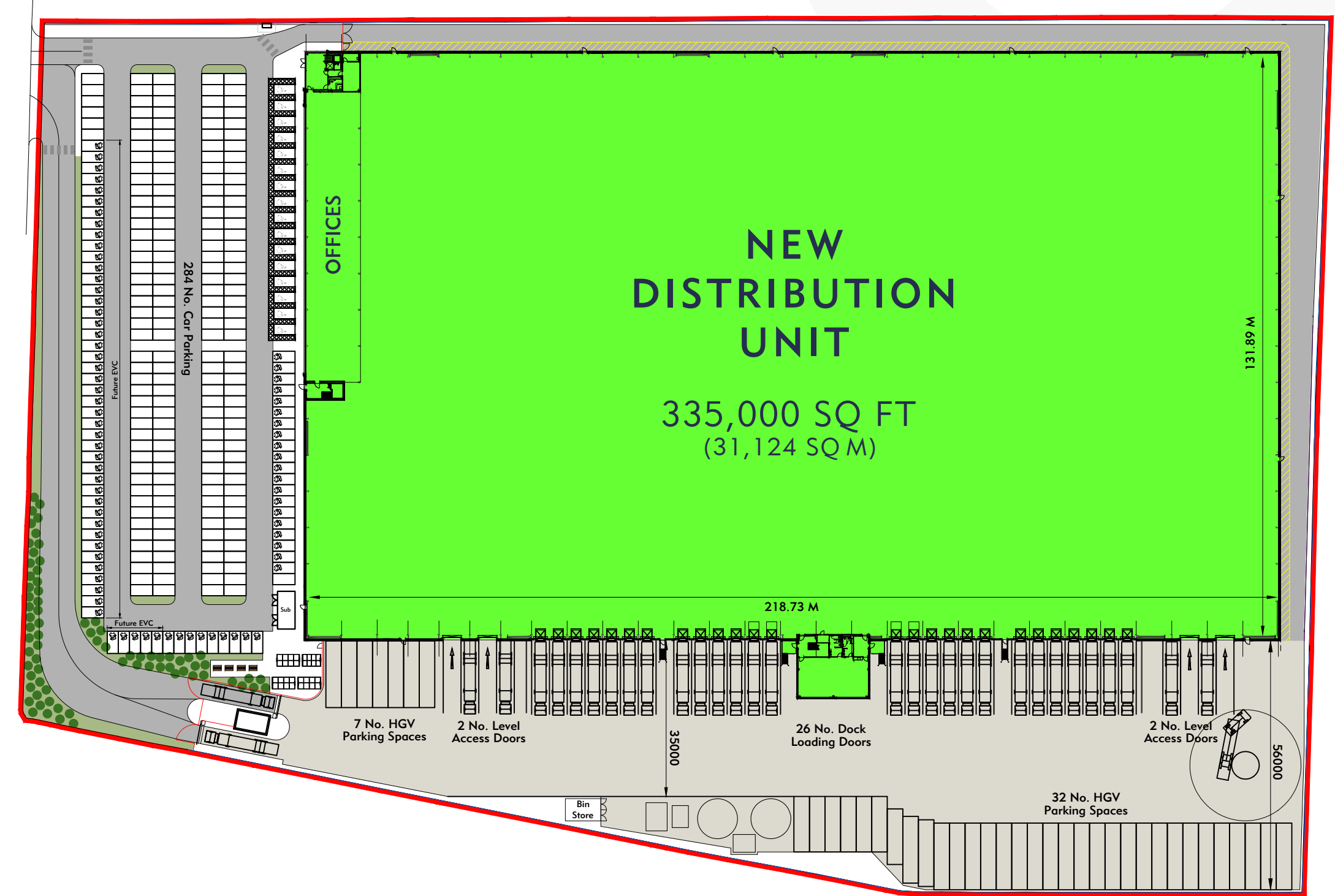
SPECIFICATION

-  26 DOCK LEVEL LOADING DOORS INC. 4 EURO DOCKS
-  4 LEVEL ACCESS LOADING DOORS
-  50 KN/m² FLOOR LOADING
-  1 MVA POWER SUPPLY
-  284 CAR PARKING SPACES
-  SECURE YARD UP TO 56M DEPTH
-  15M CLEAR INTERNAL HEIGHT
-  GRADE A OPEN PLAN FIRST & SECOND FLOOR OFFICES

ACCOMMODATION

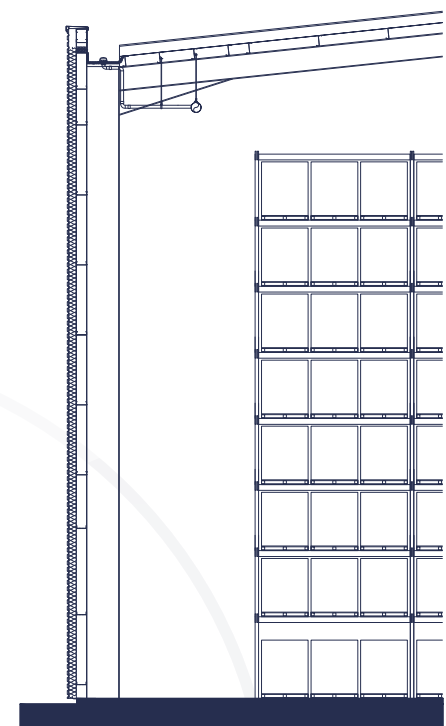
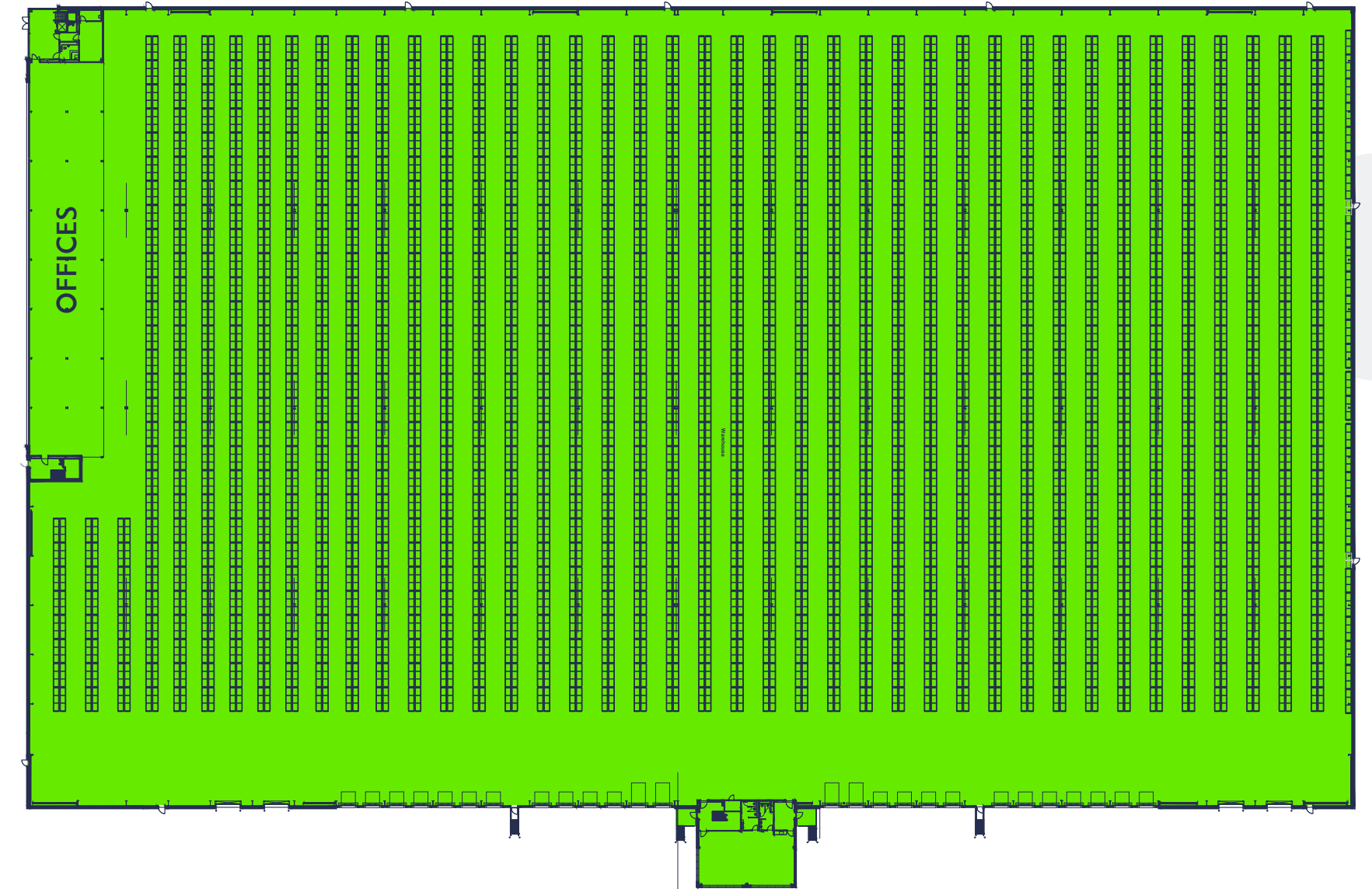
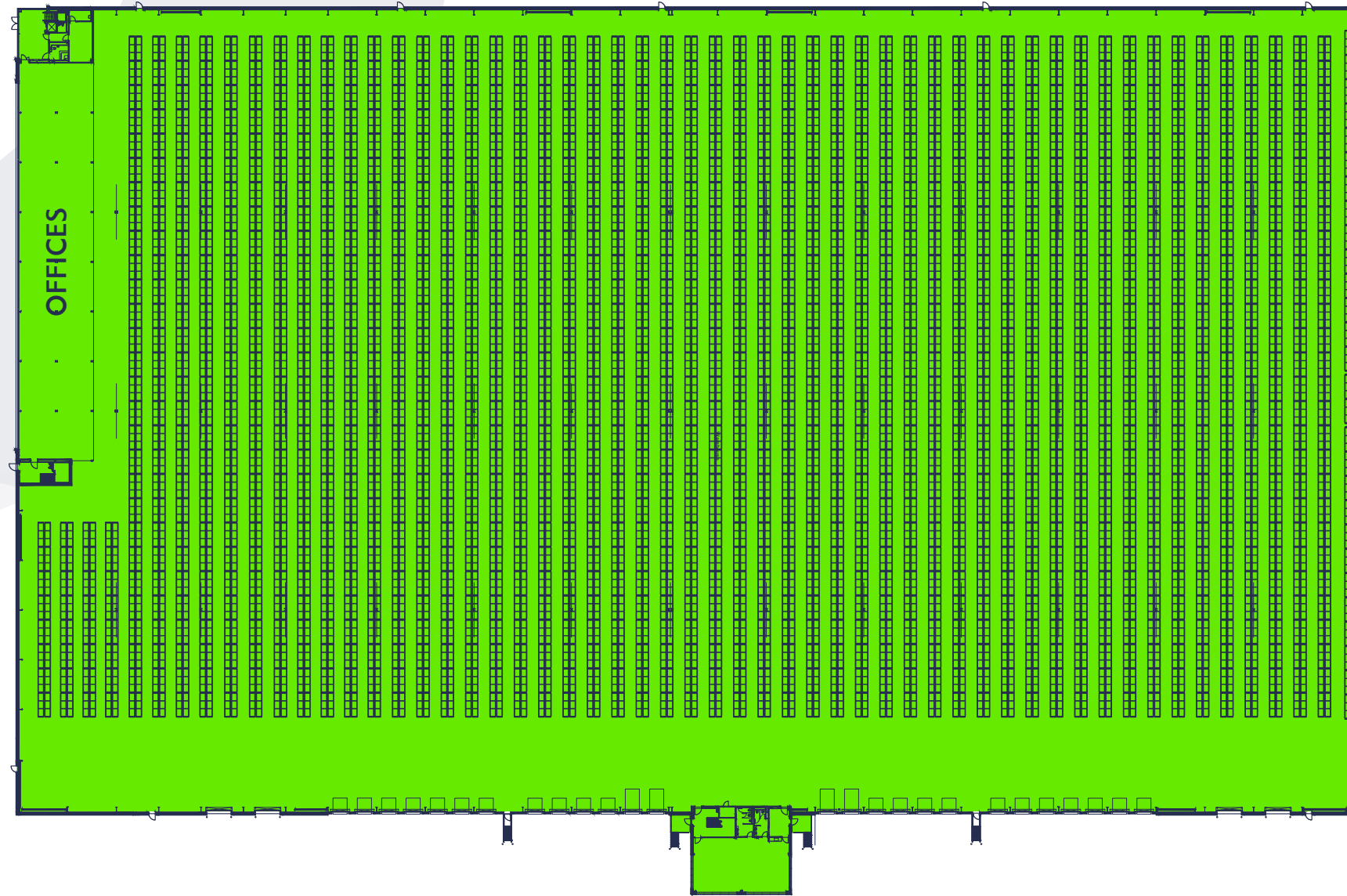
| | SQ FT | SQ M |
|--|----------------|---------------|
| WAREHOUSE | 310,000 | 28,800 |
| FIRST & SECOND FLOOR OFFICES | 20,000 | 1,858 |
| GROUND FLOOR & FIRST FLOOR TRANSPORT HUB | 5,000 | 465 |
| GATEHOUSE | 300 | 28 |
| TOTAL GIA | 335,000 | 31,151 |

Subject to final measurement.



WESTON ROAD, CREWE, CW1 6NA

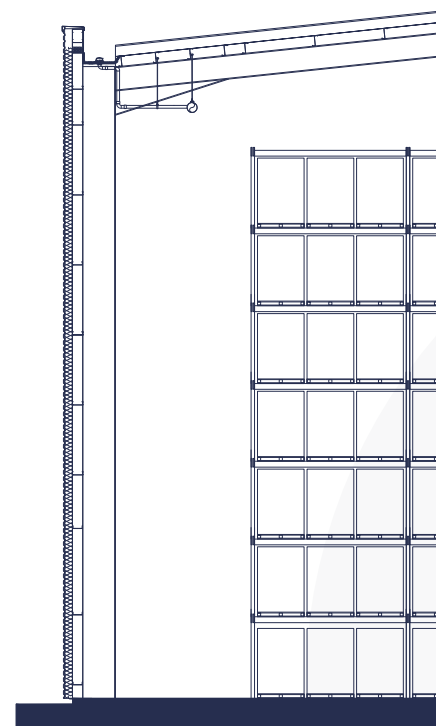
RACKING LAYOUT OPTIONS (MAXIMUM)



1.5m Pallet Height

UK 4 Way Pallets (1.20m x 1.00m)
Haunch 15m (C.I.H)
8,628 Pallets per level
Pallet Tiers: 8

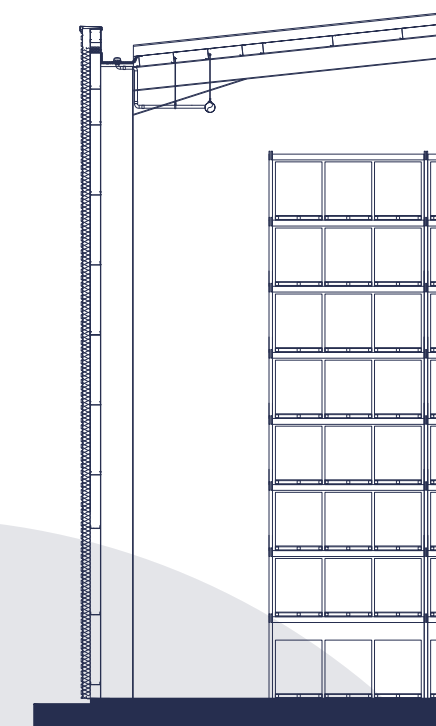
Total Pallets: 68,614



1.8m Pallet Height

UK 4 Way Pallets (1.20m x 1.00m)
Haunch 15m (C.I.H)
8,628 Pallets per level
Pallet Tiers: 7

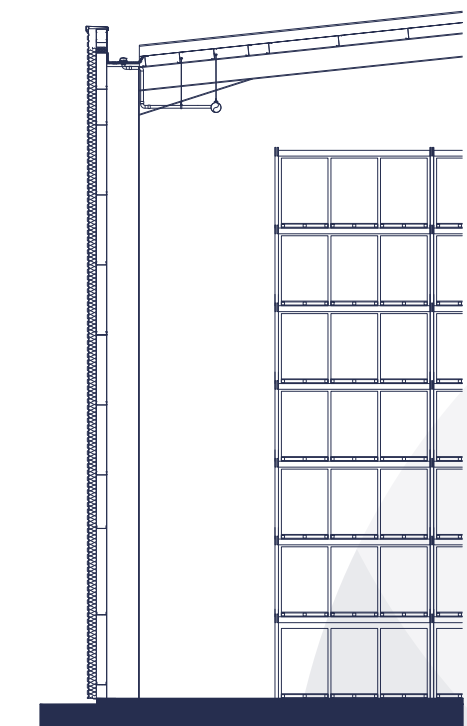
Total Pallets: 60,037



1.5m Pallet Height

UK 4 Way Pallets (1.20m x 1.00m)
Haunch 15m (C.I.H)
6,612 Pallets per level
Pallet Tiers: 8

Total Pallets: 52,486

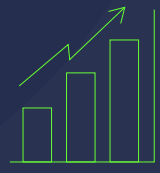


1.8m Pallet Height

UK 4 Way Pallets (1.20m x 1.00m)
Haunch 15m (C.I.H)
6,612 Pallets per level
Pallet Tiers: 7

Total Pallets: 45,925

STRENGTH IN NUMBERS



45.5%

45.5% of workforce age in Cheshire East are well educated at NVQ level 4 or equivalent, outperforming the 43.2% England average.



1,600,000

Over 1.6million persons of working age in catchment area.



LOWER MEDIAN

Crewe and Nantwich also have a lower median weekly and annual pay in comparison to the north west and England averages.



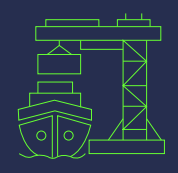
£32,099

Gross Annual Pay In Crewe & Nantwich, compared to an average of £35,100 in England.



2.9%

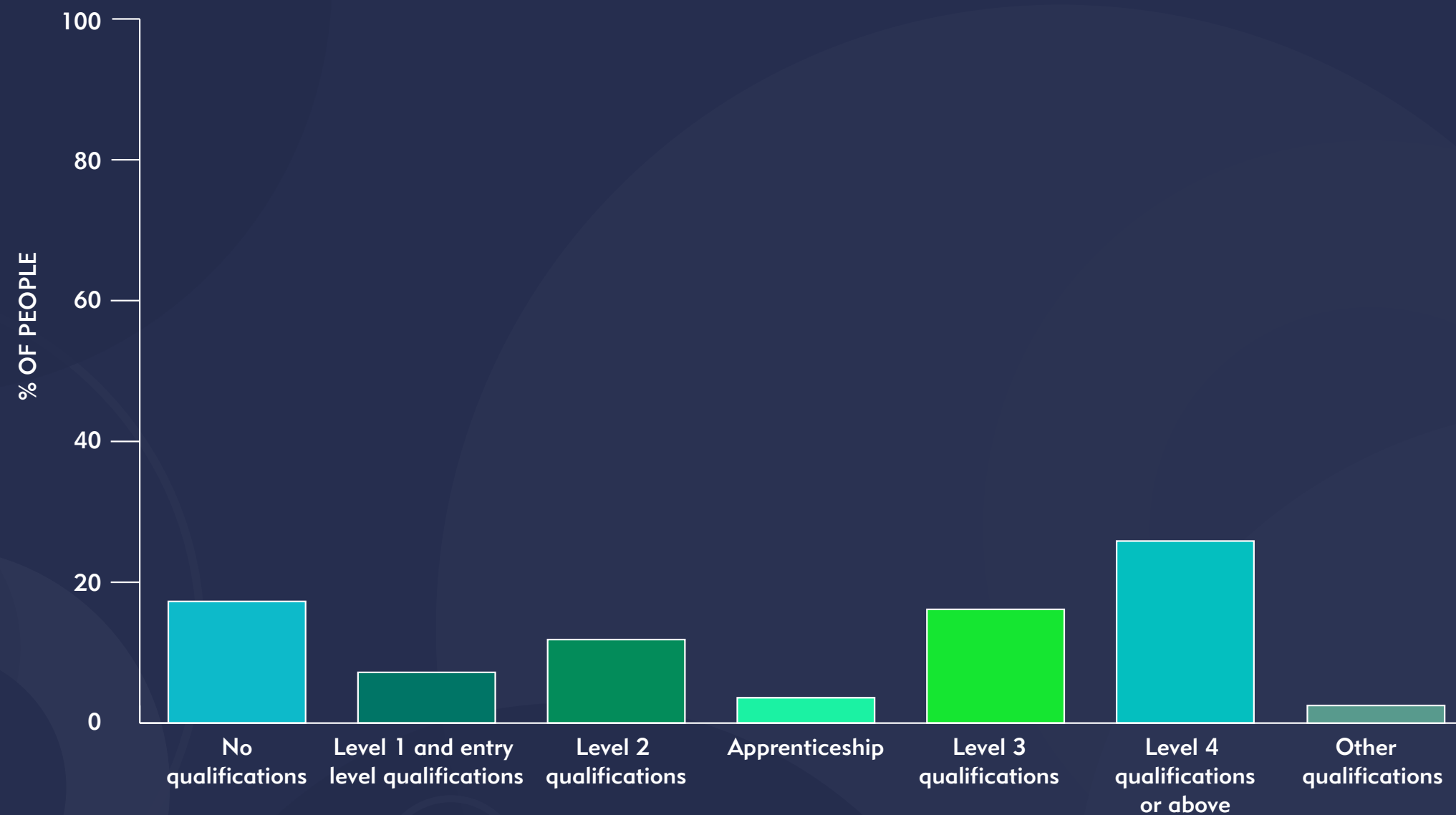
Unemployment rate in 2023 in Cheshire East was 2.9% - a lower unemployment rate than the Northwest at 3.9%, and England at 3%.



7.5%

7.5% of all employment in Crewe & Nantwich are process, plant and machine operatives.

QUALIFICATIONS



Source: ONS - 2021 Census North West Region.



PERFECTLY LOCATED FOR BUSINESS

Crewe is an established commercial location with strategic links to both the North West and Midlands, via the M6 Motorway.

Crewe 335 is well located within 1 mile of the A500 (Dual Carriageway) that links with Junction 16 of the M6 Motorway to the east. The M6 in turn provides excellent direct access to nearby centres including Manchester and Birmingham, as well as the

national motorway network thereafter including the M5, M40, M42, M56, and M62 motorways.

Furthermore, Crewe 335 is positioned prominently with frontage to Weston Road (A532) on the established Crewe Gates Industrial Estate. The site benefits from nearby public transport and cycle routes, whilst Crewe's railway station and town centre are 3 and 6 minutes away respectively (via car).



/// cycle.robots.names

POSTCODE: CW1 6NA



Local occupier – BAE Systems

Local occupiers include:



BAE SYSTEMS



Local occupier – AO



Local occupier – Buffaload



STRATEGICALLY POSITIONED

/// cycle.robots.names

POSTCODE: CW1 6NA



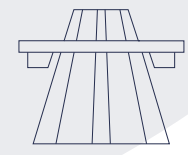
DRIVE TIMES

| | | |
|-------------------|----------|-------------|
| Crewe Town Centre | 2 miles | 6 mins |
| Stoke-on-Trent | 13 miles | 16 mins |
| Manchester | 36 miles | 45 mins |
| Liverpool | 48 miles | 55 mins |
| Birmingham | 55 miles | 1 hr 5 mins |



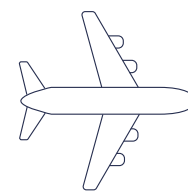
85%

85% of the UK population live within a 4.5 hour drive time (56.5 million people).



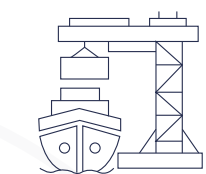
MOTORWAYS

| | | |
|-----------|----------|---------|
| M6 (J16) | 4 miles | 7 mins |
| M6 (J17) | 6 miles | 10 mins |
| A34 | 7 miles | 13 mins |
| A51 | 11 miles | 19 mins |
| M56 (J9) | 26 miles | 30 mins |
| M1 (J24a) | 54 miles | 58 mins |



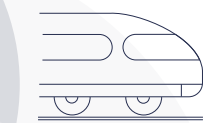
AIRPORTS

| | | |
|---------------|----------|--------------|
| Manchester | 32 miles | 37 mins |
| Liverpool | 42 miles | 57 mins |
| East Midlands | 57 miles | 1 hr 26 mins |
| Birmingham | 65 miles | 1 hr 10 mins |



PORTS

| | | |
|------------|-----------|---------------|
| Birkenhead | 44 miles | 1 hr |
| Liverpool | 48 miles | 1 hr |
| Immingham | 152 miles | 2 hrs 30 mins |
| Teesport | 152 miles | 2 hrs 30 mins |



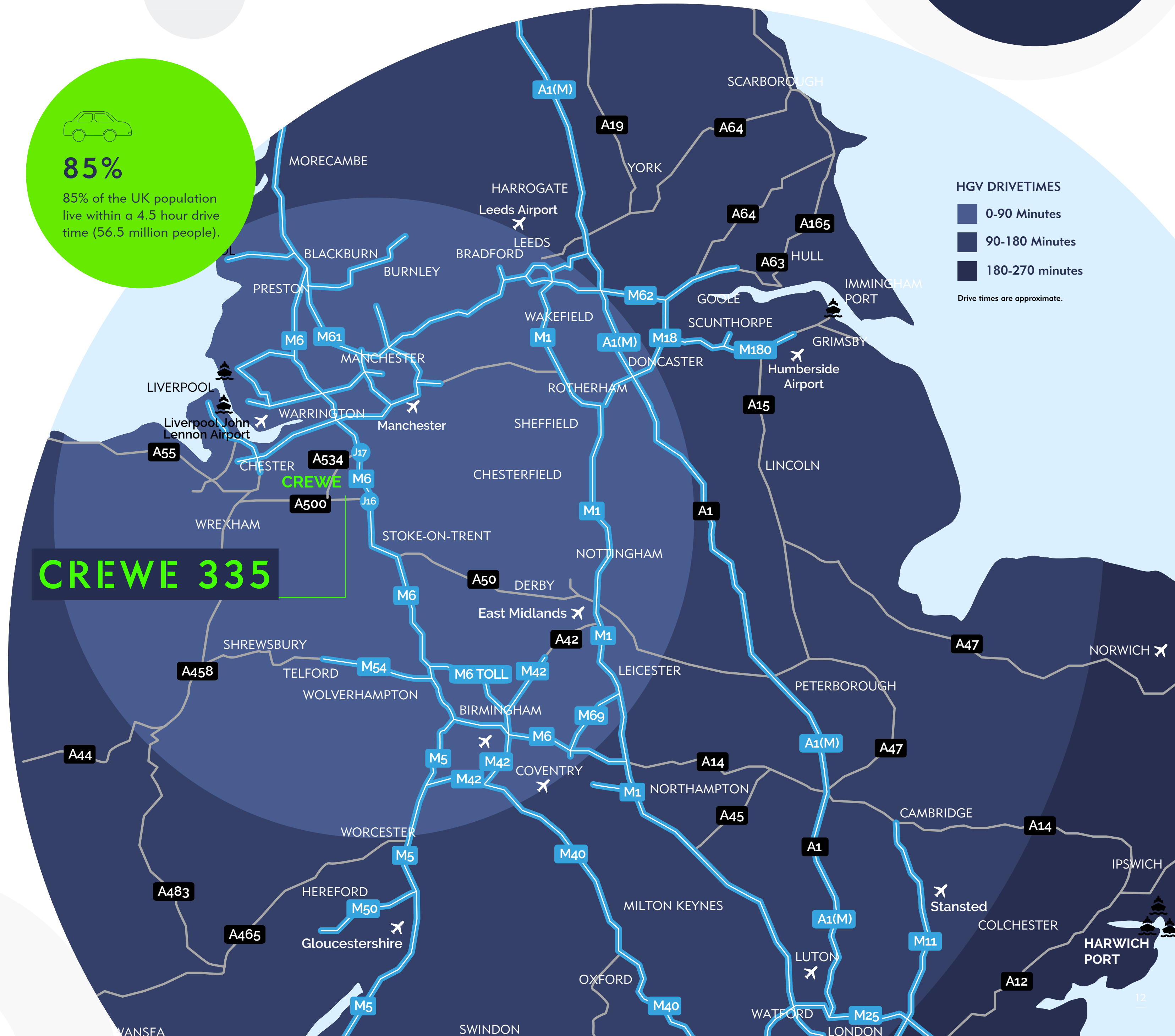
RAIL FREIGHT

| | | |
|---------------------------|----------|---------|
| West Midlands Interchange | 35 miles | 35 mins |
| Widnes | 37 miles | 40 mins |
| Port Salford | 40 miles | 45 mins |
| Trafford Park | 37 miles | 40 mins |

HGV DRIVETIMES

- 0-90 Minutes
- 90-180 Minutes
- 180-270 minutes

Drive times are approximate.



CREWE 335

SUSTAINABILITY AT ITS HEART



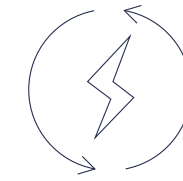
BREEAM IN USE

The Landlord will be happy to work with occupiers to obtain BREEAM in Use certification, and have a full consultant team who have worked on the scheme from inception.



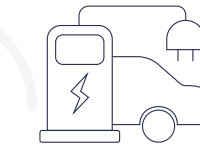
ENERGY PERFORMANCE (EPC)

The unit will achieve an EPC "A" Rating.



ENERGY EFFICIENT HEATING & COOLING

Variable Refrigerant Flow (VRF) heating / cooling system with internal ceiling concealed fan coil units fed from external air source heat pump to the offices, and efficient local electric heaters to ancillary areas.



ELECTRIC VEHICLE (EV) CHARGING

The unit will provide EV charging spaces, as well as providing ducting to enable further spaces to be constructed in the future.



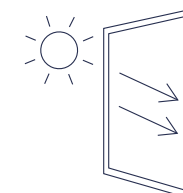
ENERGY EFFICIENT LIGHTING

Energy efficient LED lighting is provided to the offices, operated by PIR sensors and daylight dimming sensors.



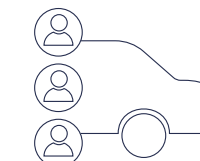
SOCIAL WELLBEING

Crewe 335 combines outdoor wellbeing areas with open plan internal areas with natural daylight to offer staff a pleasant and natural environment. Nearby pedestrian routes offer access to public transport and the unit is within walking distance to the town centre.



NATURAL DAY-LIGHT

10% of the roof panels across the warehouse are translucent, providing plenty of natural day-light.



CAR SHARING

The Landlord can mark spaces in accordance with an occupiers bespoke car sharing scheme.

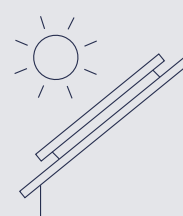
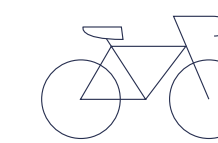


PHOTO-VOLTAIC (PV) PANELS

A provision of PV panels has been provided under the base build, whilst the roof is structurally designed to support panels across the entirety so the occupier can add more as they wish.



CYCLE PARKING

Covered cycles spaces and shower facilities have been provided.

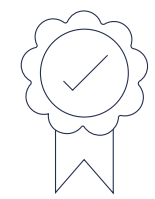
TREBOR DEVELOPMENTS

We've been paving the way for commercial properties for over a decade. Delivering units from 10,000 sq ft to 1,000,000 sq ft, we made our name implementing straightforward development processes that put sustainable building practices ahead of profits.

Founded in 2008, Trebor Developments is today a market leader in industrial development. Through our work with occupiers, agents and financial institutions, we've fulfilled the vision of countless businesses and earned a reputation for intelligent delivery.

Along the way, we've stuck to our belief that development should always be strategic. That's why your business objectives are the starting point we refer to when approaching any project. The same is true of the spaces we build to let. Everything is managed so that all stakeholders feel represented by the final outcome.

Most importantly, we have skin in the game. We're a private, owner-managed organisation with no PLC or string of shareholders to report to. Decisions are made quickly and we apply a more hands-on approach in order to make your business, our business.



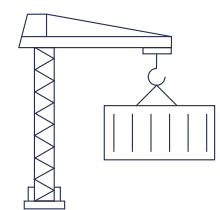
BEST IN CLASS

technical team and consultants.



6M SQ FT

committed from Q1 2022.



LIVE PROJECTS

in every region nationally, outside of the SE.



SUSTAINABILITY

Developing to BREEAM 'Excellent' and Net Zero.



FOCUSED

Small, focused home team.



PRIVATELY OWNED

Recent Occupiers:



Our Awards:



Revolution Park, Wolverhampton

"PROACTIVE, PROFESSIONAL, AND PASSIONATE"

"Trebor led all development activities having introduced the site to CROWN and achieved a very fast track programme to meet our operational targets. They have at all times been proactive, professional, and passionate about delivering the project to our requirements and they are worthy of positive recognition for this major project delivery, which we have acquired on a Freehold basis."

Richard Ford
Director - Project Management and Engineering and Real Estate
Crown Packaging Manufacturing UK Ltd.



Gateway 4, Doncaster



Central Approach, Bristol

FURTHER INFORMATION

PLANNING

Detailed planning consent for unrestricted B8 employment use [Planning Reference No. 21/5047N].

RENT

Please contact our retained agents for further information.

TENURE

The premises are available by way of a new lease and may be considered for sale, subject to occupier interest.

TIMING

Unit available for occupation from April 2025.



CREWE 335

WESTON ROAD, CW1 6NA

CONTACT

Please contact the retained agents:

**AVISON
YOUNG**

**024 7663 6888
0161228 1001**

ROBERT RAE

07860 398 744

robert.rae@avisonyoung.com

JAMES GOODE

07891 810 260

james.goode@avisonyoung.com

**Knight
Frank**
0121 200 2220
0161 833 0023
KnightFrank.co.uk

ROB TILLEY

07973 622 837

rob.tilley@knightfrank.com

JAMES CLEMENTS

07436 165 015

james.clements@knightfrank.com

H HILLWOOD
A PEROT COMPANY®

TD TREBOR
DEVELOPMENTS

IMPORTANT NOTICE Avison Young and Knight Frank give notice to anyone who may read these particulars as follows: 1. These particulars are prepared for the guidance only of prospective purchasers. They are intended to give a fair overall description of the property but are not intended to constitute part of an offer or contract. 2. Any information contained herein (whether in the text, plans or photographs) is given in good faith but should not be relied upon as being a statement or representation of fact. 3. Nothing in these particulars shall be deemed to be a statement that the property is in good condition or otherwise nor that any services or facilities are in good working order. 4. The photographs appearing in this brochure show only certain parts and aspects of the property at the time when the photographs were taken. Certain aspects may have changed since the photographs were taken and it should not be assumed that the property remains precisely as displayed in the photographs. Furthermore no assumptions should be made in respect of parts of the property which are not shown in the photographs. 5. Any areas, measurements or distances referred to herein are approximate only. 6. Where there is reference in these particulars to the fact that alterations have been carried out or that a particular use is made of any part of the property this is not intended to be a statement that any necessary planning, building regulations or other consents have been obtained and these matters must be verified by any intending purchaser. 7. Descriptions of a property are inevitably subjective and the descriptions contained herein are used in good faith as an opinion and not by way of statement of fact. Published September 2024.